



SPECTRUM IMPEX

The Scientific Centre



An ISO 9001:2015 Certified Company

NURSING & MEDICAL Product Catalogue 2024-25



ABOUT US

Page 04

NURSING MANIKINS

Page 05 - 15



- 05 Advance Nursing Training Manikin for Simulation of Fracture
- 06 Full-Functional Elderly Nursing Manikin (Unisex)
- 07 Advanced Nursing Training & Wound Care Manikin (Unisex)
- 08 Full Functional Nursing Manikin (Female)
- 08 Advanced Nursing Training Manikin (Unisex)
- 09 Basic Multi-Functional Nursing Manikin (Female)
- 09 Basic Multi-Functional Nursing Manikin (Male)
- 10 High Quality Nurse Training Doll (Male)
- 10 High Quality Nurse Training Doll (Female)
- 10 Multi-Functional Patient Care Manikin (Female)
- 11 Advanced Multi-Functional 3 years Child Nursing Manikin (Unisex)
- 11 Advanced Nursing Baby (Unisex)
- 12 Newborn Baby
- 12 Newborn Baby Model
- 12 Newborn Baby
- 12 A New Style New Born (Baby Model)
- 12 Advanced Neonate Baby with Umbilical Cord & Placenta Nursing Model
- 12 Fetus with Viscus and Placenta
- 13 Advanced Full-Functional Venipuncture & Injection Training Arm
- 13 Multi-Functional IV Training Arm with extra Skin
- 13 Injectable Training Arm Model (with Set)
- 13 Child IV Training Arm with extra Skin
- 13 Forearm Pad For Intravenous Injection
- 14 Pediatric Venipuncture Arm with Extra Skin
- 14 Intradermal Injection Pad
- 14 Multi-Functional Injection Pad
- 14 Breast Examination Model
- 14 Breast Inspection Model
- 15 Electronic Catheterization & Enema Model with Alarm Sound on Monitor (Unisex)
- 15 Male Catheterization Training Simulator
- 15 Female Catheterization Training Simulator
- 15 Enema Practice Model
- 15 Blood Pressure Measurement Arm

CPR TRAINING MANIKINS

Page 16 - 21



- 16 Adult Advanced Cardiac Life Support Training Manikin
- 17 ALS Training Manikin
- 17 Advanced CPR Training Manikin Voice Guided with Monitor & Printer
- 18 Basic Full Body CPR Training Manikin with Monitor & Voice Guidance
- 18 Advanced Half-body CPR Training Manikin with Voice Guided
- 19 Adult CPR and Intubation Training Manikin Half-Body with Monitor
- 19 Basic CPR Manikin
- 20 ACLS Neonatal Training Manikin
- 20 Full Functional Neonatal CPR & Nursing Manikin with Monitor
- 21 Advanced Infant CPR Training Manikin with Monitor & Voice Guided
- 21 Advanced Child CPR Training Manikin with Monitor & Voice Guided
- 21 Advanced Full-Functional Child CPR & Nursing Manikin (5 Years) with Monitor (Unisex)

OBSTETRICS AND GYNAECOLOGY MODELS

Page 22 - 29



- 22 Advance Delivery & Maternal & Neonatal Emergency Simulator with Monitor
- 23 Prenatal Cervical Change Model
- 24 Advanced Abdominal Palpation and Delivery Mechanism
- 24 Advanced Delivery Mechanism Demonstration Simulator
- 25 Advanced Gynecological Training Simulator
- 26 Gynecological Examination Simulator
- 26 Maternity Examination Simulator
- 26 Leopold Maneuvers Simulator
- 27 Vacuum Delivery Model
- 27 Vulva Suturing Training Simulator
- 27 Episiotomy Training Simulator
- 28 Male Condom Model
- 28 IUD Training Simulator
- 28 Female Contraception Practice Simulator
- 28 The Development Process For Fetus
- 28 The Development Process for Fetus (Half Size)
- 29 Human Fertilization and Early Embryogeny
- 29 Fertilization Process Simulator
- 29 Human Female Pelvis Section (4 Parts)
- 29 Ovary Model
- 29 Human Placenta
- 29 Embryo

MEDICAL MODELS

Page 30 - 33



- 30 Advanced Trauma Simulator
- 30 Surgical Suturing and Bandaging Simulator
- 31 Central Venous Catheterization Simulator
- 31 Contrastive Intramuscular Injection Buttocks
- 31 Buttock Injection Model
- 31 Suturing Skin Pad with Stand
- 31 Diabetic Foot Nursing Simulator
- 32 Advanced Surgical Suture Arm
- 32 Advanced Surgical Suture Leg
- 32 Airway Intubation Model with Monitor
- 33 Nasogastric Feeding & Tracheal Intubation Simulator
- 33 Infant Airway Management Model
- 33 Child Tracheal Intubation Model

SKELETON MODELS

Page 34 - 42



- 34 Life-Size Human Skeleton (180 cm) Tall on a Pelvic Mounted Stand
- 34 Life-Size Human Skeleton (180 cm) with Muscles & Ligaments on a Pelvic Mounted Stand
- 35 Disarticulated Skeleton Model (BILATERAL)
- 35 Medium Skeleton with Nerves and Blood Vessels (85 cm)
- 35 The Model of Fetus Skeleton
- 35 Mini Skeleton (45 cm)
- 36 Didactic Flexible Vertebral Column With Pelvis
- 36 Life-Size Vertebral with Pelvis and Femur Head (85 cm with stand)

SKELETON MODELS

Page 34 - 40



- 36** Shoulder Joint with Muscle
- 36** Hip Joint with Muscle
- 36** Knee Joint with Muscle
- 37** Cervical Vertebral Column with Neck Artery
- 37** Cutaway Osteoporosis
- 37** Thoracic Spinal Column
- 37** Life-Size Pelvis with 5 Pcs. Lumbar Vertebrae
- 37** Lumbar Set
- 37** Life-Size Lumbar Vertebrae with Sacrum & Coccyx and Herniated Disc
- 38** Life-Size Shoulder Joint with Ligaments
- 38** Life-Size Hip Joint with Ligaments
- 38** Life-Size Knee Joint with Ligaments
- 38** Life-Size Elbow Joint with Ligaments
- 38** Life-Size Foot Joint
- 38** Life-Size Hand Joint
- 38** Life-Size Foot Joint with Ligaments
- 38** Life-Size Hand Joint with Ligaments
- 39** Adult Male Pelvis with Stand
- 39** Adult Female Pelvis with Stand
- 39** Birth Demonstration Model
- 39** Female Pelvis Muscles and Organs
- 39** Bone Microstructure
- 40** The Model of Skull with Numbers
- 40** Life-Size Skull
- 40** Life-Size Colored Skull
- 40** Skull Model with 8 Parts Brain
- 40** Skull with Cervical Spine
- 40** The Model of Fetus Skull with Stand
- 40** Human Fetal Skull

ANATOMICAL MODELS

Page 41 - 49



HEART & CIRCULATORY SYSTEM

- 44** Jumbo Heart Model
- 44** Middle Heart Model
- 44** Human Circulatory System
- 44** The Dissection Model of Heart (attached with Diseased Artery Vas)



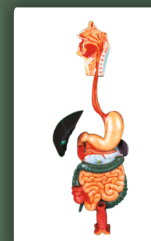
RESPIRATORY SYSTEM

- 45** Transparent Lung, Trachea & Bronchial Tree with Heart
- 45** Human Respiratory System
- 45** Magnified Human Pulmonary Alveoli Model
- 45** Larynx, Heart and Lungs Model
- 45** Model of the Transparent Lung Segment



DIGESTIVE SYSTEM

- 46** Stomach Model
- 46** Liver, Pancreas & Duodenum Model
- 46** Liver Model
- 46** Human Digestive System
- 46** Appendix and Caecum



EXCRETORY SYSTEM

- 47** Male Urogenital System
- 47** Female Urogenital System
- 47** Urinary System Model
- 47** Human Kidney Macro Structure With Adrenal Gland
- 47** Kidney Microstructure
- 47** Human Excretory System



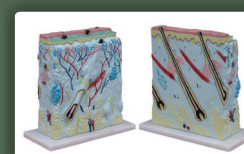
REPRODUCTIVE SYSTEM

- 48** Human Reproductive System Male
- 48** Human Reproductive System Female
- 48** Male Genital Organs
- 48** Female Genital Organs
- 48** Female Internal & External Genital Organs
- 48** Magnified Uterus Model



SKIN

- 49** Enlarged Skin Model
- 49** Skin Block Model
- 49** Palm Anatomy
- 49** Normal Flat and Arched Foot
- 49** Teeth Model in Oral Cavity
- 49** Dental Care Model (32 Teeth)



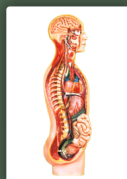
ANATOMICAL MODELS

Page 41 - 49



BRAIN & NERVOUS MODELS

- 41** Brain with Arteries
- 41** Brain with Arteries 9 Parts
- 41** Brain with Arteries on Head
- 41** Head with Brain
- 41** Neuron
- 41** Human Nervous System
- 41** Spinal Cord in the Spinal Canal



EYE

- 42** Giant Eye Model
- 42** Eye with Orbit



ENT

- 42** Nasal, Oral, Pharynx & Larynx Cavities
- 42** The Model of Lingual Muscle with Mandible (4 Parts)
- 43** Magnified Human Larynx Model
- 43** Model of the Head
- 43** Model of the Anatomical Nasal Cavity
- 43** New Style Giant Ear Model



HUMAN TORSO MODELS

Page 50 - 51



- 50** Muscles of Male with Internal Organs (170 Cm)
- 50** Full Size Human Body Showing Muscles & Organs (86 Cm)
- 50** Unisex Torso 23 Parts (85 cm)
- 51** Muscles of Arm with Main Vessels and Nerves
- 51** Muscles of Leg with Main Vessels and Nerves
- 51** Head and Neck with Blood Vessels Nerves and Brain
- 51** Human Torso 18 Parts (Sexless) 42 cm

COMMUNITY HEALTH BAG

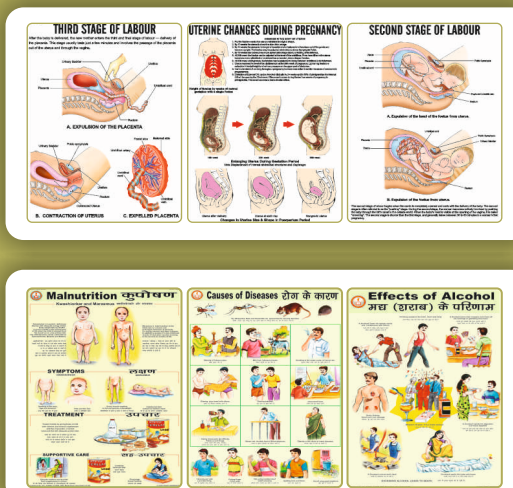
Page 52

- 52** Community Health Bag



EDUCATIONAL CHARTS

Page 53 - 60



OUR CERTIFICATE

Certificate IN08/02112

The management system of

Spectrum Impex

20/14, Ballygunge Place, Kolkata, 700019, West Bengal, India

has been assessed and certified as meeting the requirements of
ISO 9001:2015

For the following activities
Importer and Distributor of Medical Educational Teaching Aids

SGS

This certificate is valid from 22 December 2023 until 22 December 2026 and remains valid subject to satisfactory surveillance audits.
Issue 8. Certified since 23 December 2008

Jonathan Hall

Authorised by
Jonathan Hall
Global Head - Certification Services

SGS United Kingdom Ltd
Rosemore Business Park, Ellesmere Port, Cheshire, CH65 3EN, UK
t+44 (0)151 350-6666 - www.sgs.com



This document is an authentic electronic certificate for Client's business purposes use only. Printed version of the electronic certificate are permitted and will be considered as a copy.
This document is issued by the Company subject to SGS General Conditions of certification services available on [Terms and Conditions](#) | SGS. Attention is drawn to the limitation of liability, indemnification and jurisdictional clauses contained therein. This document is copyright protected and any unauthorized alteration, forgery or falsification of the content or appearance of this document is unlawful.



About Us

We, **Spectrum Impex**, are one of the Biggest **Importer and Distributors of Scientific Teaching and Educational Aids** in the Indian Market which are used in Training Purposes in Hospitals, Medical Colleges, Nursing Training Institutes and Colleges. We are an **ISO 9001:2015** company certified by SGS in which it is clearly mentioned that we are genuine importers.

Spectrum Impex are **Authorised Distributors** of many big manufacturers of **Scientific Teaching & Educational Aids** for many decades. In support to this, we have **Authorised Certificates** that we buy-sell genuine products only. These products are tested at manufacturers' end and also at our premises to ensure that only flawless products reach to our clients. For the satisfaction of clients, we obtain feedback from them and carry out our operations accordingly so that the traded products fulfil their requirements.

Both Government and Private Educational Institutions acknowledge our products range for its **Durability, Accuracy, Scientific Soundness and Clarity** of different features of a human body in the form of models. We have launched many new products which are in demand for **Skill Development** in Hospital, Medical Colleges and Nursing Training Institutes.

We are committed to supply and meet present and future requirements of our clients.

The Quality Policy of **Spectrum Impex** is stated below:

- a. Having Flexibility in our Teaching Aids product range.
- b. Continuous Improvement in Quality and Accuracy of Teaching Aids.
- c. Continuous upgrade Process of Systems and Skills.
- d. Adequate stock of most of our product range and On-Time delivery.
- e. Comply with all applicable Legal and other requirements.



GD/J112 Advance Nursing Training Manikin for Simulation of Fracture

This full-body lifelike manikin is specifically designed for professional nursing training. This high quality manikin will provide wide range of exercises possible including both first aid and emergency situations.

This manikin help students to understand fracture symptoms such as deformity, bone fricative and abnormal movements and carry out diagnosis and treatment. Can help the trainee master cleaning, disinfection, binding up, fracture reduction and fixation and handling operation of fracture trauma in practice.

Features:

01. Hair and face washing
02. Eye and ear washing and administering
03. Mouth cavity and artificial teeth care
04. Endotracheal intubation
05. Sputum suction
06. Oxygen inhaling
07. Oral and nasal feeding
08. Gastrolavage
09. Main organs in thoracic cavity
10. Venipuncture, injection, blood transfusion (Arm)
11. Deltoid subcutaneous injection
12. Vastus lateralis injection
13. Thoracic cavity, abdominal cavity, liver, bone marrow and lumbar puncture
14. Enema
15. Female urethral catheterization
16. Male urethral catheterization
17. Female bladder irrigation
18. Male bladder irrigation
19. Ostomy
20. Buttocks intramuscular injection
21. Main organs in abdominal cavity
22. Holistic nursing care: sponge bath, replacing clothes

GD/H220B Full-Functional Elderly Nursing Manikin (Unisex)

The manikin is designed according to the physiological characteristic of male/female old people for basic clinical nursing training. The product consists of full-body male/female elderly manikin and non-invasive blood pressure simulator with about 50 kinds or nursing functions, made of imported PVC material, fine quality, environmental protection, realistic shape as human, easily washable these help nursing workers understand and care for old people during the nursing process.

Basic nursing functions:

1. Hair and face washing
2. Pupil observation, Bilateral pupil states; normal, mydriasis
3. Eye and ear washing and administering
4. Removal and insertion of hearing aid
5. Oral cavity and artificial teeth care
6. Endotracheal intubation, automatically monitor whether the tracheal intubation is correct or not through sensor, support auscultation to detect intubation site
7. Incision of trachea nursing
8. Sputum suction
9. Oxygen inhaling
10. Oral and nasal feeding
11. Gastrolavage
12. Venipuncture, injection, transfusion (arm)
13. Deltoid subcutaneous injection
14. Vastus lateralis injection
15. Thoracic cavity, abdominal cavity, liver bone marrow and lumbar puncture
16. Breast nursing mammary gland examination
17. Enema
18. Male / Female urthelial catheterization
19. Male / Female bladder irrigation
20. Stoma drainage
21. Colostomy
22. Buttocks intramuscular injection
23. Large area of sacral ulcer
24. Cancer tumor contrast
25. Cleavage lines contrast
26. Holistic nursing: sponge bath, replacing clothes, cold and hot therapy
27. Realistic limbs joint, stiff simulative joints, truck may lean forward, can sit it the wheelchair
 - 1) Truck - rotation, flexibility
 - 2) Neck - rotation, flexibility, lateral curvature
 - 3) Shoulder and buttock - endoduction abduction rotation, flexibility
 - 4) Elbow- internal rotation, external rotation
 - 5) Knee - internal rotation, external rotation
 - 6) Wrist- internal rotation, flexibility, stretching, bending
 - 7) Ankle - introversion, eversion, endoduction, abduction
28. Non-invasive blood pressure measurement
 - 1) Systolic and diastolic pressure may be set individually in steps of 1mmHg
 - 2) Systolic pressure 0-300mmHg, diastolic pressure 0-300Hg
 - 3) Korotkoff sound volume in ten steps, 0-9
29. Diabetes foot nursing

GD/H220B

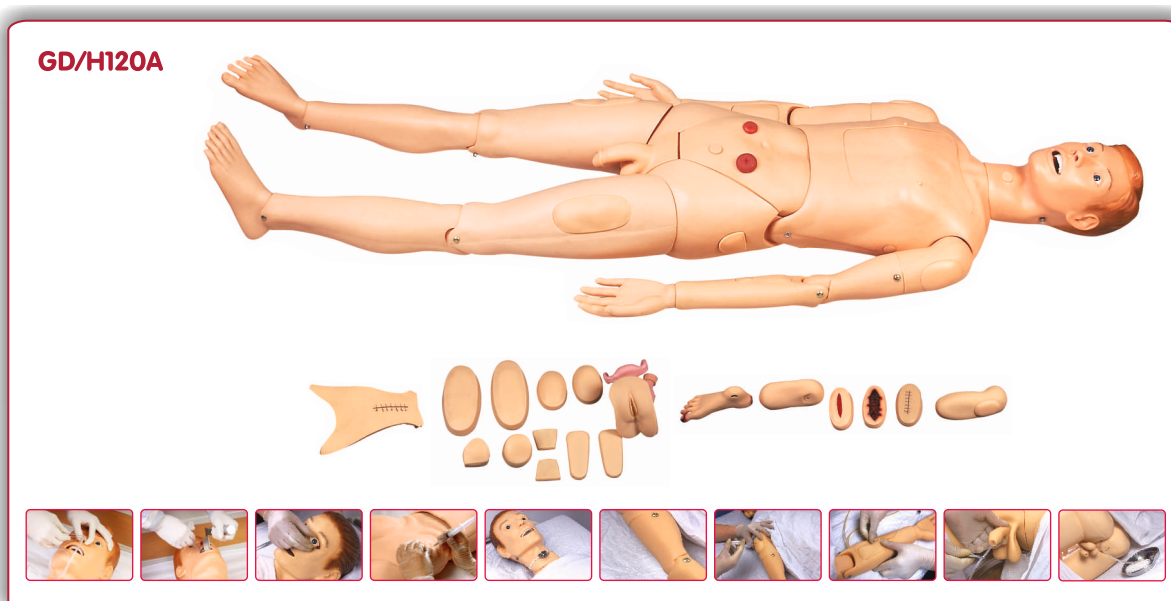


GD/H120A Advanced Nursing Training & Wound Care Manikin (Unisex)

This Advanced Nursing and Wound care model is a full-body lifelike male manikin, which is specifically designed for professional nursing training. This high quality manikin will provide wide range of exercises possible including both first aid and emergency situations.

NURSING SKILL:

1. Head care: hair washing, face washing
2. Irrigation of the eyes and ears
3. Oral cavity care
4. Oral cavity and nasal cavity intubation
5. Oxygen inhalation
6. Oral and nasal feeding
7. Lavage
8. Organs structure of thorax
9. Venipuncture and injection, transfusion
10. Deltoid injection
11. Puncture of thorax, abdominal cavity, liver, medulla and lumbar
12. Enema
13. Urethral Catheterization for male and female
14. Irrigation of bladder for male and female
15. Ostomy irrigation
16. Gluteus injection
17. Organs structure of abdominal cavity
18. General care, bed bathes, dressing and undressing
19. Wound care: disinfection, dressing change, binding, hemostasia
20. Trauma parts;
 - a. The suturing care for the wound on the chest wall
 - b. The suturing care for the wound on the abdomen
 - c. The suturing care for the wound on the thigh
 - d. The care for the bruise of the skin of thigh
 - e. The care for the infectious ulceration
 - f. The care for the foot gangrene
 - g. Wound of forearm amputation
 - h. Wound of calf amputation



GD/H120B Full Functional Nursing Manikin (Female)**GD/H120B**

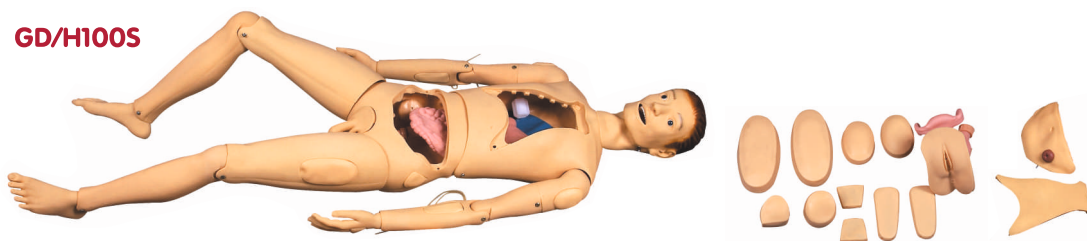
This Advance Nursing Training Manikin is a full-body life like Female manikin which is specially designed for professional nursing training. This Nursing Manikin could simulate an actual circumstance for practice. Multiple functions, rural practice, easy assembly, well shaped appearance and correct anatomical landmarks provides a very good training for practice.

Features:

1. Hair and face washing, hair combing (with artificial hair)
2. Eye and ear washing and administering
3. Mouth cavity and artificial teeth care
4. Endotracheal intubation
5. Sputum suction
6. Oxygen inhaling
7. Oral and nasal feeding
8. Gastrolavage
9. Breast care and inspection
10. Venipuncture, injection, blood transfusion (Arm)
11. Deltoid subcutaneous injection
12. Puncture of thorax, abdominal cavity
liver, medulla and lumbar
13. Vastus lateralis injection
14. Thoracic cavity, liver, bone marrow and lumbar puncture
15. Enema
16. Female / male urethral catheterization
17. Female / male bladder irrigation
18. Ostomy
19. Buttocks intramuscular injection
20. Organs structure of abdominal cavity
21. Holistic nursing care: sponge bath, replacing clothes, cold and heat therapy.
22. Limbs joints: bend, rotation and upper or lower movement
23. General care, bed bathes, dressing and undressing

GD/H100S Advanced Nursing Training Manikin (Unisex)

This full-body lifelike manikin is specifically designed for professional nursing training. This high quality manikin will provide wide range of exercises possible including both first aid and emergency situations.

GD/H100S**Features:**

1. Hair and face washing
2. Eye and ear washing and administering
3. Mouth cavity and artificial teeth care
4. Endotracheal intubation
5. Sputum suction
6. Oxygen inhaling
7. Oral and nasal feeding
8. Gastrolavage
9. Main organs in thoracic cavity
10. Venipuncture, injection, blood transfusion (Arm)
11. Deltoid subcutaneous injection
12. Vastus lateralis injection
13. Thoracic cavity, abdominal cavity, liver, bone marrow and lumbar puncture
14. Enema
15. Female urethral Catheterization
16. Male urethral catheterization
17. Female bladder irrigation
18. Male bladder irrigation
19. Ostomy
20. Buttocks intramuscular injection
21. Main organs in abdominal cavity
22. Holistic nursing care: sponge bath, replacing clothes

GD/H2 Basic Multi-Functional Nursing Manikin (Female)

This Nursing Manikin can demonstrate the following Basic Nursing Skills.



Features:

- | | |
|--|--------------------------------------|
| 1. Hair and face washing, hair combing and sponge bath | 12. Chest drainage |
| 2. Mouth cavity care | 13. Abdominal drainage |
| 3. Endotracheal intubation | 14. Bone marrow puncture |
| 4. Oxygen inhaling | 15. Lumbar puncture |
| 5. Nasal feeding | 16. Deltoid subcutaneous injection |
| 6. Gastrolavage | 17. Venipuncture injection |
| 7. Intracardiac injection | 18. Blood transfusion (Arm) |
| 8. Closed chest cardiac resuscitation | 19. Female clyster |
| 9. Pneumothorax | 20. Female urethral catheterization |
| 10. Breast Care | 21. Female bladder irrigation |
| 11. Liver puncture | 22. Buttocks intramuscular injection |

SI/NM-700 Basic Multi-Functional Nursing Manikin (Male)



This full body life-like Male manikin is specifically designed for professional nursing training. The quality of this manikin will provide many sessions or training when used with reasonable care. This multi-functional simulator can easily be assembled, well shaped appearance and correct anatomical landmarks.

Nursing Skill :

- | | |
|--|---|
| 1. Head care : hair washing, face washing, oral cavity care. | 11. Thorax Puncture |
| 2. Bed bathes, dressing and undressing | 12. Liver Puncture |
| 3. Patient moving, bedspread changing for bedridden patient. | 13. Lumbar Puncture |
| 4. Tracheotomy care | 14. Deltoid Injection |
| 5. Oxygen inhalation | 15. Deltoid subcutaneous Injection |
| 6. Nasal Feeding | 16. Veni-puncture and Intravenous injection |
| 7. Gastric Lavage | 17. Male Catheterisation |
| 8. Intracardiac Injection | 18. Buttock muscle injection |
| 9. External Cardiac resuscitation maneuver method | |
| 10. Pneumothorax | |

XC-401A High Quality Nurse Training Doll (Male)**XC-401B High Quality Nurse Training Doll (Female)****Description:**

This model is developed for nurse training, is widely used in first aid and emergency rescue as well as the regular nurse training. This model is made according to the normal position and activities of the human body as much as possible. Each model is equipped with male and female genitalia, can exchange to use. Model of the arms, thigh and buttock have injection pads available training. This model is equipped with internal organs, not only for basic nursing, medical care available to use also. Made of PVC.

Feature:

- | | |
|---|---|
| 1) Head nursing: face washing, eye drops ear drops, oral care | 8) Arm intravenous injection, transfusion training |
| 2) Holistic Nursing: sponge bath in bed, sitting sponge bath wear clothes, cold or heat therapy | 9) Injection Next Deltoid |
| 3) Oxygen inhaling | 10) Intramuscular injection |
| 4) Nasal feeding | 11) Male and female catheterization |
| 5) Gastric lavage | 12) Enema |
| 6) Tracheostomy care | 13) Percutaneous transrenalstomy |
| 7) Study chest anatomical structure of vital organs | 14) Study abdominal cavity anatomical structure of vital organs |

XC-401 Multi-Functional Patient Care Manikin (Female)**Description:**

This Economical model is suitable for the health and nursing schools and medical schools at all levels for use in nursing teaching. All the joints can move actively, the waist can bend, all parts are detachable. The model is made of Semi-Hard plastic, material is durable, using conveniently, can execute a variety of training nursing and simple operation.

Feature:

- | | |
|---|---|
| 1) Face washing, body washing in bed | 8) A variety of simple puncture simulation: Pleural biopsy, the liver biopsy, kidney puncture, abdominal puncture, bone marrow puncture and lumbar puncture |
| 2) Oral cavity nursing, artificial teeth care | 9) Deltoid muscle injection, subcutaneous injection |
| 3) Simple tracheostomy nursing | 10) IV injection |
| 4) Oxygen inhalation method (stuffy nose, nasal catheter) | 12) Venous transfusion |
| 5) Nasal feeding | 13) Intragluteal injection |
| 6) Simple gastric lavage | 14) Female Catheterization |
| 7) Simple CPR press | |

GD/FT333 Advanced Multi-Functional 3 years Child Nursing Manikin (Unisex)

Designed according to the anatomical characteristics of child and specializing in child care training. Applying imported materials, the skin is soft and flexible, not easily deformed, realistic shape, lovely appearance, and clear internal anatomical structure. Good helper for pediatric nursing teaching and training.

Features:

1. Pupil observation.
2. Operations of child care: full body bandage exercise, bathing, changing clothes, hair combing, eye washing and administering, otic drops and irrigation, mouth cavity care, blood collection of finger and TB test.
3. Airway management: realistic mouth, nose, tongue, gum, pharynx, larynx, esophagus, epiglottis, trachea and tracheal ring can practice tracheal intubation, sputum suction, oxygen inhaling.
4. Oral and nasal feeding
5. Gastrolavage
6. Venipuncture, injection, transfusion (Arm). There is an obvious feeling when needle penetrates into vein and blood flash back indicates proper insertion.
7. Intramuscular injection in bilateral deltoid, bilateral vastus lateralis and bilateral buttock.
8. Enema placement of rectal suppository
9. Urethral catheterization (Male/Female)
10. Holistic care: sponge bath, replacing clothes, cold and heat therapy
11. Limbs joints: Bend, rotation, upper and lower movement.
12. Bathing and bandaging activity
13. Ostomy nursing of ileum, colon and bladder.
14. Tibial bone marrow puncture: simulate the process of bone marrow puncture, obvious body surface symbol. Simulated bone marrow would outflow in the case of correct puncture.

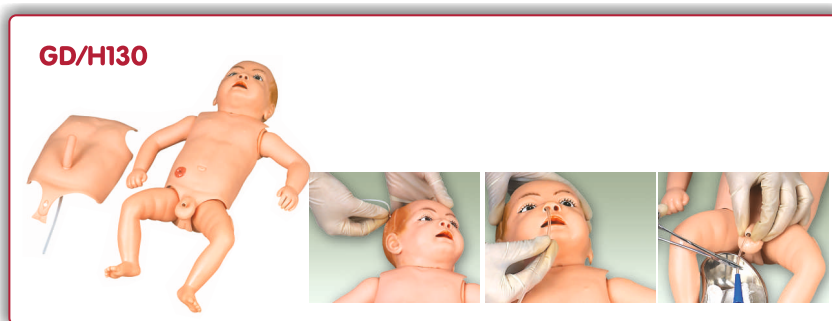


GD/H130 Advanced Nursing Baby (Unisex)

This Advanced Nursing Baby Manikin is specifically designed for professional nursing training. This high quality manikin provide wide range of exercises possible including both first aid and emergency situations.

BASIC NURSING SKILL :-

1. Movable head, neck, hand and foot
2. Cephalic vein puncture
3. Umbilic vein injection
4. Oronasal intubation nursing
5. Stomach washing, clyster and catheter nursing
6. Ostomy
7. Hand-foot subcutaneous injection
8. Washing, lactation, dressing



GD/FT1 Newborn Baby

GD/FT1



This model is made of Polymerised rubber material and developed by moulding method. It has realistic shape and reasonable structure and high durability.

GD/FT4 Newborn Baby Model

GD/FT4



This model is made of Polymerised rubber material and developed by moulding method. It has realistic shape and reasonable structure and high durability.

XC-409 Newborn Baby

The size and configuration of this model is almost same as the normal newborn baby. The head, upper limbs, lower limbs and all joints are flexible. It can demonstrate the characteristic of the newborn baby and all kinds of operations in clinical education : includes different parturition method, newborn baby bath etc. Made of soft PVC plastic.

XC-409



XC-409A A New Style New Born (Baby Model)

The size and configuration of this model is almost as same as the normal newborn baby. The head, upper limbs, lower limbs and all joints are flexible. It can demonstrate the characteristic of the newborn baby and all kinds of operations in clinic education includes different parturition method, newborn baby bath etc. Made of soft PVC plastic.

XC-409A



XC-409C Advanced Neonate Baby with Umbilical Cord & Placenta Nursing Model

- 1) Female newborn systemic model, moveable head and limbs
- 2) Realistic umbilical cord with umbilical vein and artery
- 3) Umbilical cord ligation and nursing, realistic touch feeling, the enough length of umbilical cord can be used continually
- 4) Neonatal basic nursing: lactation, sponge washing.

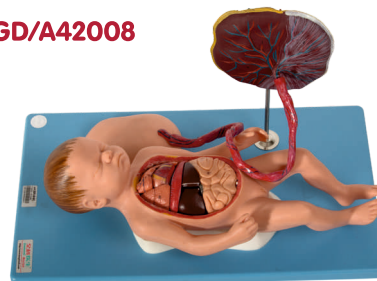
XC-409C



GD/A42008 Fetus with Viscus and Placenta

The models shows a female fetus at the end of the pregnancy with placenta and umbilical cord, separated into 13 parts as follows: Placenta, umbilical cord, abdominal cover, 2 pcs of lungs, 2 pcs of hearts, thymus, diaphragm, liver, stomach, intestine and body. Material: Advanced PVC and painted with imported paint.

GD/A42008



GD/HS39 Advanced Full-Functional Venipuncture & Injection Training Arm



This training arm provides complete venous access including Cephalic Vein, basilica vein, medial cubital vein, medial anterior cubital vein, dorsal metacarpal vein, etc. It allows venous hemospasia, transfusion, blood transfusion and injection operation. The venous system is setup with arm and self-contained transfusion blood vessels fitting, which is one of the most commonly used teaching aid for clinical nursing.

Features :

1. Provides veni puncture, injection, transfusion and blood transfusion training including cephalic V, basilic V, medial cubital V, medial anterior cubital V and dorsal metacarpal V.
2. Upper arm lateral deltoid intramuscular injection, deltoid subcutaneous injection intradermal injection.
3. The realism of the arm is truly amazing with multiple realistic blood vessels embedded in the arm. Under normal use, repeated multiple times injection procedure can be performed.

GD/HS2 Multi-Functional IV Training Arm with extra Skin

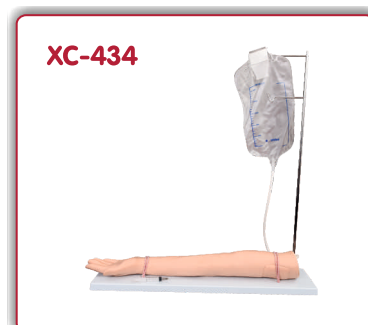
This Adult Vein Puncture and Injection Training Arm has all the 8 vena of the vascular system of the arm. It helps to provide a good training of injection, infusion and phlebotomization. This model can provide a real life like feel when the students practice on it.



XC-434 Injectable Training Arm Model (with Set)

This Economical arm model can demonstrate the following items:

1. Vein phlebotomy on elbow forearm
2. Vein injection on elbow forearm
3. Vein blood transfusion on elbow forearm
4. Vein liquid transfusion on elbow forearm
5. Muscular injection on deltoid on the side of upper limb



GD/HS8 Child IV Training Arm with extra Skin

Features:

1. Simulate the arm of child (4 years old)
2. Lifelike arm reproduction with multi-vein system designed for peripheral intravenous therapy.



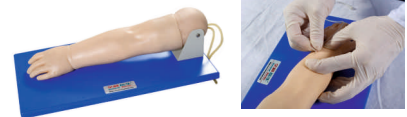
NS-6012 Forearm Pad For Intravenous Injection

- Wearable design
- Replaceable skin and blood vessel
- Venipuncture
- I.V., transfusion, blood sampling, etc.
- Realistic feedback, blood backflow
- Repeating practice on same spot



GD/HS32 Pediatric Venipuncture Arm with Extra Skin

Advanced Pediatric Venipuncture Model is one of the most commonly used teaching aids for basic clinical nursing ; it is composed of rubber plastic arm and infusion blood vessel, etc. The model features anatomic structure of hand, vivid blood vessel structure and clear landmarks, allowing hand venous puncture training. And it is applicable for High Medical Schools, Nursing College, Occupational Technology Colleges and hospital clinical workers to practice and demonstrate hand venous puncture. Can repeat puncture operation and can be replaced after damage.

GD/HS32**NS-6016 Intradermal Injection Pad****NS-6016**

- 30 injection spots
- Plastic stand
- Intradermal injection
- Realistic feedback, similar to negative result in skin test
- Allow repeating practice

NS-6018 Multi-Functional Injection Pad**NS-6018**

- Rotation design allow shift used part away and increase use life of the model
- Plastic base
- Intramuscular injection
- Intradermal injection : realistic skin test feedback
- Hypodermic injection

GD/F7A Breast Examination Model**GD/F7A****Functionality characteristic :**

Palpation of galactophore malignant tumor, innocent tumor, lymphaden and lobulus accrementition.

GP-6620 Breast Inspection Model**GP-6620**

Breast model is implanted with innocent tumour and malignant tumor, allow to practice diagnosing according to the position, size, texture and movement. Model has realistic appearance and precise anatomical structure for inspection practice

NS-6070 Electronic Catheterization & Enema Model with Alarm Sound on Monitor (Unisex)



- Model is adult lower abdomen with genitals (male/female exchangeable)
- Electronic box monitoring and indicating catheterization practice

GD/H17E Male Catheterization Training Simulator



Features:

1. General urethral Catheterization process can be operated.
2. There is resistance when advancing the catheter through mucosal fold, bulb of urethra and intra urethral sphincter.

GD/H17F Female Catheterization Training Simulator



Features:

1. General urethral Catheterization process can be operated.
2. There is resistance when advancing the catheter through urethral sphincter.

NS 6034 Enema Practice Model



Features :

- Life-Size realistic texture, common position for enema, left lateral position.
- Allow injecting liquid
- Practice multiple methods of enema

NS 6029 Blood Pressure Measurement Arm



The model consists of adult arm, blood pressure gauge, stethoscope and control box. Allows to adjust systolic pressure, diastolic pressure, pulse frequency and volume according to needs.

GD/ACLS 10800 Adult Advanced Cardiac Life Support Training Manikin

The product adopts imported environmental material. The system consists of manikin, large screen colored display, simulative AED and remote controller can act a serial of emergency means, such as : CPR, tracheal intubation, real defibrillation and pacing, simulative defibrillation and pacing, ECG study and assessment, etc. It provides a simple and practical ACLS training tool for emergency physicians.

Implement standard : AHA (American Heart Association) 2010 guideline for CPR and ECC

Features :

1. Bilateral pupils contrast observation: normal, mydriasis, simulate carotid pulse.
2. Airway management ; standard oral and nasal intubation supporting open airway by head tilt and jaw thrust, there is alarm warning if pressure is exerted on teeth.
3. CPR: can be artificial respiration and chest compressions, operation type: one or more training, full English prompts, the standard open airway, instantaneous displaying graphics of data, statistics report sound directions related to CPR.
4. Simulating of a patient: the changes of pupils and carotid ; the sounds of respiratory, moan, cough and vomit, more than 16 kinds of rhythm (access to 3/4 lead ECG monitoring) unilateral or bilateral bronchial obstruction ; laryngospasm simulation.
5. Intravenous infusion and blood pressure measure training
6. Real defibrillation and pacing ; can be used with different kinds of defibrillator and Pacemaker, can perform real defibrillation and pacing. (Should be arranged by yourself)
7. Pre-hospital emergency evaluation module
8. Medicine box ; coordinate with emergency operation
9. ECG Inspection

Standard components

1. ACLS computer screen
2. Standard manikin
3. Infrared remote controller
4. GD/HS7 advanced BP measuring unit
5. Airway management component
6. Simulation of drug delivery devices

Alternative accessories :

(To be purchased along with the manikin, if required)

1. Rescue console
2. Trauma modules of limbs

Optional accessories :

GD/AED99F Automatic External Defibrillation Machine
Real ECG monitor



GD/ALS 10750 ALS Training Manikin**GD/ALS 10750**

GD/ALS10750 provides ALS emergency skills training, its main function is CPR and airway management. The main modules consist of full-body manikin, large-screen LCD display. It provides a simple and practical ALS training tool.

Implement standard: AHA (American Heart Association) 2015 guideline for CPR and ECC

Features:

1. Bilateral pupils contrast observation: normal, mydriasis, simulate carotid arterial pulse.
2. Airway management: standard nasal and oral intubation, tracheotomy intubation, supporting to head tilt and Jaw thrust, audible feedback if pressure exerted on the teeth during intubation.
3. CPR: instantaneous displaying graphics of data, statistic report, sound directions related to CPR, result printing, automatic scoring system
4. Pre-hospital emergency evaluation module
5. Arm Injection

Standard components:

1. ALS Computer monitor
2. Full-Body manikin
3. Laryngoscope

GD/CPR 10280 Advanced CPR Training Manikin Voice Guided with Monitor & Printer

This Simulation of Adult Model is designed according to the International CPR standard. In this model there is Light Indicator Display for Correct and Incorrect Artificial Respiration (mouth-to-mouth). There is Light Indicator Display for Correct Compression position display, Wrong Compression position display, digital counter. This model simulates the patient revival through first aid by measures of Heart Pressure and mouth-to-mouth respiration. This model also shows whether the operation is correct or not by Light Indicator, Audio Prompting and Grade Printing. An Ideal model for use in Hospitals, Medical Colleges and Nursing Training Institutes.

GD/CPR 10280

CPR-2300 Basic Full Body CPR Training Manikin with Monitor & Voice Guidance



This Adult CPR Training Manikin is designed according to the International CPR standard. This new designed CPR Training manikin has a better shape and functions for a much professional practice for those who are not professional in CPR Training.

- Full body CPR Manikin with Smart Monitor (LED Light and voice indication)
- Airway status indication on monitor
- Manual carotid pulses through pulse bulb
- Ventilation through mouth to mouth or pocket mask volume indicated on monitor
- Chest compression, pressing position and depth indicated on monitor
- Practice indication in comply with the latest AHA CPR & ECC Guideline

CPR-1950S Advanced Half-body CPR Training Manikin with Voice Guided



This product is developed and produced by professionals in the purpose of providing an improved and convenient CPR Training manikin for medical college, hospital and department of health's training program.

Features:

- Half Body CPR Manikin
- Built in voice indication system in comply with the latest AHA CPR & ECC Guideline
- Airway status indication
- Manual carotid pulses through pulse bulb
- Ventilation through mouth to mouth or pocket mask, volume indication
- Chest compression, pressing position and depth indication

GD/J158C Adult CPR and Intubation Training Manikin Half-Body with Monitor


Implement standard: AHA(American Heart Association) 2015 guideline for CPR and ECC

Features:

1. Pupil response: Bilateral pupils contrast observation
2. Carotid artery response: pinching pressure the ball to simulate carotid pulse;
3. Chest compression
4. Standard airway open
5. Feasible three ways to open the airway: lift jaw with head back, lift the head and neck, lift jaw by hands
6. Mouth resuscitation and ventilator-assisted breathing, effective artificial respiration has visible chest rise
7. Simulate laryngeal mask airway and composite cannula can be inserted into the airway
8. Verify endotracheal intubation correct or not: a catheter inserted into the trachea, lungs will swell (plastic bladder) when inflated; if the catheter is inserted by mistake esophagus, stomach will swell when inflated (plastic pouch).
- Observed pulmonary respiration
9. Artificial ventilation.
10. Oral or nasal intubation and esophageal intubation
11. Open the airway and practice from resuscitator bag to breathing mask or from resuscitator bag to the cannula.
12. Respiratory tract is simple and can be replaced
- Easy to carry, suitable for field training

GD/CPR 166 Basic CPR Manikin


- Half-length simulated human for CPR, complying with 2015 International CPR Standard.
- Adult and child position include a clicking sound for checking the correct compression depth according to Guidelines 2015.
- The selector on the back allows to choose Adult or Child position. "N" position on the selector allows checking without a clicking sound and without depth limit the acquired skills.
- The unique valve design allows being connected nose-mouth-lung. The articulated head is not tilted properly and the nose is not pinched then there will be no chest rise. Made of Polymerized Rubber.

GD/ACLS 145 ACLS Neonatal Training Manikin

GD/ACLS 145



The system provides comprehensive neonatal ACLS emergency skills training. The manikin is designed according to neonatal anatomic structure and physiological characters, made of imported environmental material. This simple and practical ACLS training tool provides CPR, tracheal intubation, real and simulative defibrillation and pacing, ECG study and assessment and other emergency ways, which applies to major hospitals, medical schools and sanitation schools simulative emergency operation.

Implement standard: AHA (American Heart Association) 2015 guideline for CPR and ECC

Features:

1. Vital signs simulation: bilateral pupil observation: dilated and normal; simulate carotid artery, femoral artery, brachial artery and umbilical artery pulse;
2. Airway Management: Real mouth, nose, gums, throat, esophagus, epiglottis, trachea; it can be do intubation and suction through mouth.
3. CPR operation training: provide multiple ventilation ways: mouth to mouth, mouth to nose, BVM to mouth; electronic monitoring of airway open, inflation times, frequency, volume and compression times, frequency, position and depth; automatic judgment of artificial respiration and chest compression ratio; real-time data display, English voice prompts during the entire process;
4. AED: simulate AED, English voice during the entire process; provide electrode button; automatic heart rhythm detection and analyze if the defibrillation is needed;
5. ECG monitoring: can perform ECG monitoring; 20 kinds of ECG are available;
6. Real defibrillation and pacing: can perform real defibrillation and pacing by using with the real defibrillating pacer (should be arranged by yourself)
7. Heart and Lung Auscultation: It can do auscultation and recognize hundreds of sound such as normal and abnormal heart sound, breath sound, bowel sound and vascular murmur with manikin.

Standard components:

1. Intelligent ACLS Neonate Manikin
2. GD/HS7 BP Training Equipment
3. GD/Z970N Heart and Lung Auscultation Simulator Set
4. GD/XD1000N ECG Generator
5. GD/CC999N Defibrillator Convertor
6. CPR Displayer
7. BVP, Stethoscope, Laryngoscope, Tracheotomy tube, Infusion set

GD/FT335 Full-Functional Neonatal CPR & Nursing Manikin with monitor

GD/FT335



Features:

- General care: change diapers, change clothes, mouth care, cold and hot therapy, bandaging.
 - Venous transfusion/puncture, arm veins include and scalp vein includes.
 - Umbilical cord care : ligature of umbilical cord, umbilical venous intubation and transfusion.
 - Gastric intubation : detect tube position by means of auscultation; can practice gastrointestinal decompression, nasal feeding, gastric lavage etc.
 - Bone marrow puncture: practice tibial puncture; outflow of simulative bone marrow shows proper puncture operation; drug liquid can be injected into and can practice transfusion operation;
- CPR operation training : supporting multiple breathing ways by mouth, mouth to nose and simple respirator to mouth; electronically monitor compression; frequency and volume of blowing, compressing times, frequency and depth, blowing and compression can be training separately.

CPR-1600 Advanced Infant CPR Training Manikin with Monitor & Voice Guided

CPR-1600



This Infant CPR is designed in accordance with the anatomical structure and characteristics of infant. It could practice infant CPR training; the monitor supervises the ventilation volume and the compression depth.

This CPR is as per 2010 AHA (American Heart Association) Guidelines for CPR and ECC.

- Infant CPR Manikin with LED Lights monitor.
- Mouth to mouth ventilation, volume indication.
- Chest compression indication.

CPR-1700 Advanced Child CPR Training Manikin with Monitor & Voice Guided

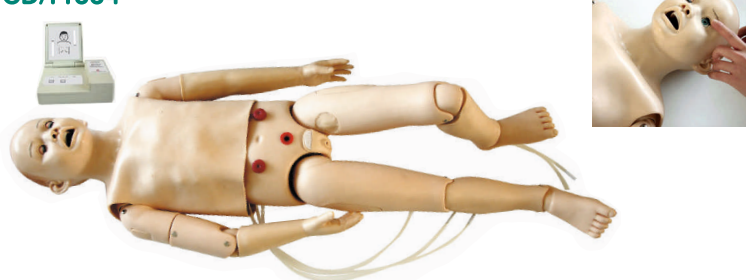
CPR-1700



- Child CPR manikin with LED lights monitor
- Air drive sensor monitor indicate practice
- Airway occlusion/open
- Manual carotid pulses through pulse bulb
- Ventilation through mouth to mouth or pocket mask, volume indication
- Chest compression depth indication

GD/FT334 Advanced Full-Functional Child CPR & Nursing Manikin (5 Years) with Monitor (Unisex)

GD/FT334



- General care: Skin care (e.g. wear and changes clothes), mouth care, ear, irrigation, bandaging training, changing diapers, cold and hot therapy;
- Venus puncture/transfusion: dorsal vein of hand, femoral vein, dorsal vein of foot
Intramuscular injection: Bilateral deltoid, bilateral vastus lateralis
- Subcutaneous injection: The subcutaneous of lateral thigh bone

marrow puncture: distinct body marks; practice tibial puncture; outflow of simulative bone marrow shows proper puncture operation;

- Gastric intubation: Detect tube position by means of abdominal auscultation; can practice gastrointestinal decompression, gastric lavage etc. aspiration of gastric fluid indicates proper intubation;
- Urethral catheterization: replaceable male/female perineum, practice male/female urethral catheterization Leum, rectum, bladder stoma care.
- CPR operation training: Support multiple ventilation ways: mouth to mouth, mouth to nose, BVM to mouth; electronic monitoring of inflation frequency, volume compression number, frequency and depth; can only practice inflation or compression.

GD/F55 Advance Delivery & Maternal & Neonatal Emergency Simulator with Monitor**Automatic Birthing System. Fully simulates the real delivery process with CPR Pregnant Woman**

Advanced Delivery and Maternal and Neonatal Simulator is a comprehensive education system, which consists of a delivery maternal manikin and a normal newborn, according to the basic requirement of obstetrics, providing a complete birth experience and emergency skills operation. Simulator features includes automatic delivery system, fetus and placental expulsion, prenatal cervix examination and postpartum episiotomy, prenatal gravida and fetus and postpartum maternal and neonatal care, removable stomach cover, multiple fetal heart sounds auscultation and CPR operation etc. The model is made of imported PVC material. The stomach wall is injection molded. Perineum is made of sponge emulsion material, features soft texture, good flexibility, realistic operation, reasonable structure and durability. It is one of the ideal teaching aids for clinical obstetrics practice training.

Features:

System components:

1. Delivery and adult emergency used maternal manikin
2. Emergency and nursing neonatal manikin
3. Child birthing fetus
4. Delivery process and fetal heart sound controller
5. Adult CPR electronic display
6. Simulative cervical os
7. Antepartum cervical changes and birth canal relation modules
8. Post partum 48 hours uterus
9. Postpartum perineum incision and suturing modules
10. Simulative placenta/umbilical cord
11. Lifting "Soft pad" for Leopold maneuver practice
12. Other auxiliary utensils

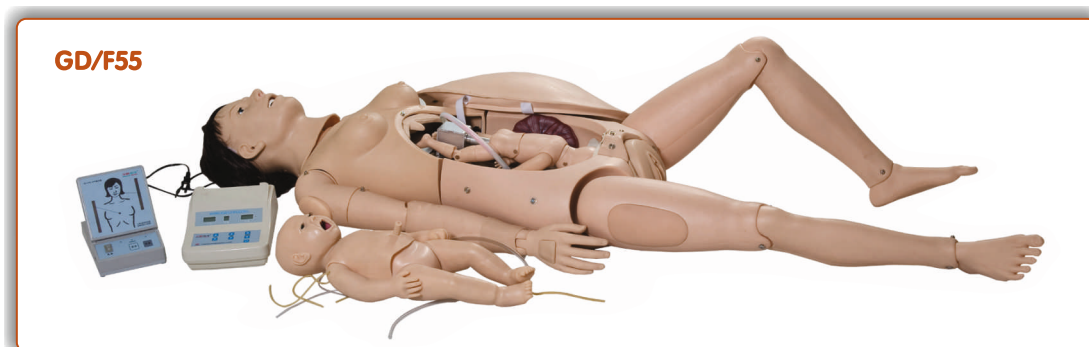
Maternal Manikin features:

1. The mechanical gear device is equipped with two mechanical adapters for connecting simulative delivery fetus; fetus and adapter, the adapter and adapter, adapter and gear device are all fixed with elastic clamp device. There are system protective limit switches on both top and lower end of the gear device.
2. The delivery process and fetus heart sound controller can suspend, initialize, start and continue the delivery process; delivery speed is adjustable according to requirement, have 1-4 steps;
3. Fetal heart sound auscultation: can set fetal heart sound frequency and volume, heart rate is adjustable between 70-180?
4. Can simulate head birth, breech delivery, narrow birth canal, cord around neck, fore-lying placenta, etc;
5. With highly simulative cervix
6. Equipped with lifting "Soft pad" for practicing Leopold maneuver;
7. Equipped with antepartum cervical change and birth canal change modules, which can be fitted to maternal manikin for training;

Stage 1: no dilation of cervix; cervical canal does not disappears; the position relation between fetal head and ischial spine plane is -5;

Stage 2: 2 cm cervical dilation; disappears 50% of cervical canal; the position relation between fetal head & ischial spine plane is -4;

Stage 3: 4cm cervical dilation; cervical canal completely disappears; the position relation between fetal head & ischial spine place is -3;



Stage 4: 5cm cervical dilation; cervical canal completely disappears; the position relation between fetal head and ischial spine place is 0;

Stage 5: 7cm cervical dilation; cervical canal completely disappears; the position relation between fetal head and ischial spine place is +2;

Stage 6: 10cm cervical dilation; cervical canal completely disappears; the position relation between fetal head and ischial spine place is +5;

8. Can measure fetal head descent and cervical dilation
9. Can simulate multiple placenta position
10. Can set venous channel in maternal arm for giving administration and nutrition
11. Vulvar suture practice modules, including left lower, medial and right lower three incision position
12. Tracheal intubation training
13. Manually simulate carotid artery pulse

Neonatal Manikin features:

1. Holistic function
2. Nursing features: eye irrigation and drops, neonatal washing and bandaging
3. Oral and nasal intubation, infant sputum suction, tracheal intubation and gastric lavage
4. Infant umbilical cord nursing, scalp vein puncture, arm venous puncture, there is obvious feeling for venous puncture, and blood flash back indicated correct puncture
5. Neonatal CPR
Supports multiple ventilation ways: mouth to mouth, mouth to nose, bag respirator to mouth
Can act artificial respiration
Can act external compression

Maternal Manikin CPR Training:

Complying with AHA (American Heart Association) 2005 emergency guideline for CPR, can act artificial respiration and external compression; electronic monitoring of operation datas with voice prompt; can observe obvious chest rise while inflation.



GD/F20G Prenatal Cervical Change Model



This series models consists of six development phases and each parts shows a state of prenatal cervix and birth canal. The whole models demonstrate the relations between the scope of the expanding of the orifice of cervix, and the range of cervical tunnels, as well as the relation between the position of the head of fetus and the square of ischial spine.

Stage 1 - no dilation of cervix; cervical canal does not disappears; the position relation between fetal head and ischial spine place is -5

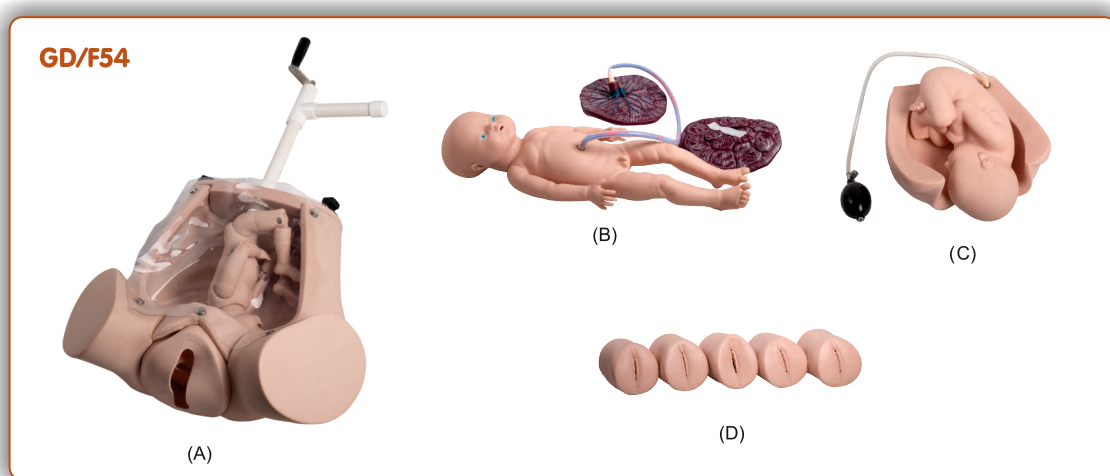
Stage 2 - 2 cm cervical dilation; disappears 50% of cervical canal; the position relation between fetal head & ischial spine place is - 4;

Stage 3 - 4 cm cervical dilation ; cervical canal completely disappears; the position relation between fetal head & ischial spine place is - 3;

Stage 4 - 5 cm cervical dilation; cervical canal completely disappears; the position relation between fetal head & ischial spine place is - 0;

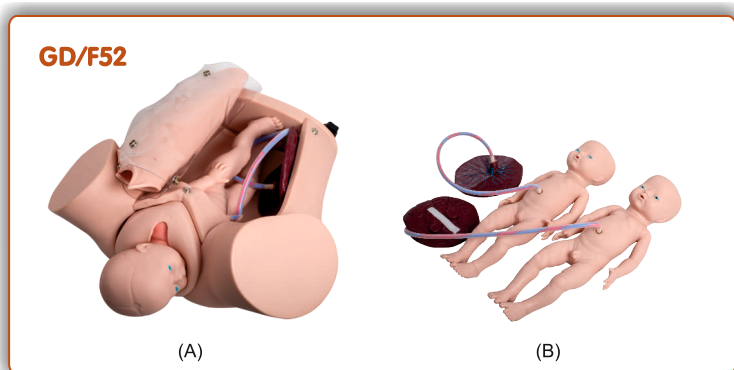
Stage 5 - 7 cm cervical dilation; cervical canal completely disappears; the position relation between fetal head & ischial spine place is +2;

Stage 6 -10 cm cervical dilation; cervical canal completely disappears; the position relation between fetal head & ischial spine place is +5;

GD/F54 Advanced Abdominal Palpation and Delivery Mechanism**Features :**

1. Demonstrate the fetus, umbilical cord and placenta of vacuum-assisted delivery, flexible fetal joint and multiple normal and abnormal positions of fetal delivery can be showed.
2. Equipped with manual delivery mechanical parts; by manual the whole delivery process including engagement, descending, flexion, internal rotation, extension, restoration, external rotation and fetal delivery can be showed.
3. Can practice and master the comprehensive skills of normal labor, abnormal labor (dystocia), midwifery and perineum protection.
4. Equipped with soft elevated cushion for Leopold Maneuver practice.
5. Equipped with models for cervical and vaginal examination practice before and a birth

Component : **A** (Matrix for Manual Delivery Demonstration) + **B** (Fetus for Demonstration) + **C** (Lifting Soft Pad for Leopold Maneuver Practice) + **D** (Cervical Changes Models)

GD/F52 Advanced Delivery Mechanism Demonstration Simulator**Features:**

1. Demonstrate the whole process of delivery;
2. Demonstrate the fetus, umbilical cord and placenta of vacuum-assisted delivery, flexible fetal joint and multiple normal and abnormal positions of fetal delivery can be showed;
3. Can practice and master the comprehensive skills of normal labor, abnormal labor (dystocia), midwifery and perineum protection
4. Available training of multiple pregnancy (twin pregnancy) Component: A (Matrix For Delivery Demonstration) + B (Fetus For Demonstration)

GD/F35 Advanced Gynecological Training Simulator**GD/F35****Features :**

1. Including all the functions of GD/F30S.
2. Hysteroscopy checking
3. Laparoscopic visualization checking can observe the uterus, accessories, round ligament, uterine and other structures
4. Allow to place the female condoms, contraceptive sponge, cervical cap and other contraceptives.
Cervix and uterus can be replaced.

The Components :

The normal and abnormal uterus and accessories model can be bimanual and triple diagnosis checking

1. Normal uterus and accessories (the front uterus wall is transparent, so the IUD can be placed and took out.)
2. Normal uterus and accessories.
3. Uterus associated with significant flexion, forward.
4. Uterus associated with significant back flexion, back forward.
5. Uterus associated with right ovarian cysts tubal.
6. Uterus associated with right tubal cyst.
7. Uterus associated with right hydrosalpinx
8. Uterine fibroids
9. Uterine inflammation associated with the right accessories uterine malformations.

Normal and abnormal cervix model

(it is used for checking the parts by gynecatoptron)

1. Normal cervix
2. Chronic cervicitis
3. Acute cervicitis
4. Cervical cyst Inflammation Bohnert
5. Cervical polyp
6. Cervical adenoma

Normal and abnormal cervix model (it is used for checking the parts by Hysteroscopy.)

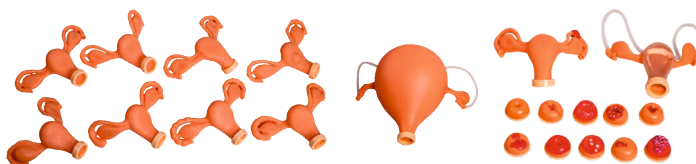
1. Normal uterus
2. Endometrial polyp
3. Endometrial hyperplasia
4. Uterine Fibroids
5. Early uterine body cancer
6. Advanced uterine body cancer
7. End uterine cancer
8. Pregnant uterus model
9. 6-8 weeks of pregnancy the uterus
10. 10-12 weeks of pregnancy the uterus
11. 20 weeks of pregnancy the uterus
12. Simulation of post partum 48 hours uterus.
13. The process of placing and taking out the IDU.

GD/F30S Gynecological Examination Simulator

This Gynecological Examination Simulator is specifically designed for professional training.

The various functions of these model are as follows :-

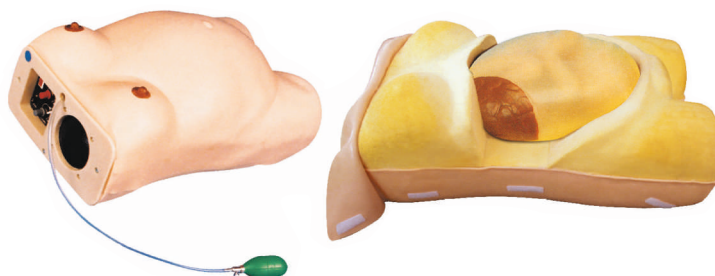
1. Palpation of normal and pregnant uterus
 2. Bi-manual pelvic and tri-manual pelvic examination
 3. Vaginal examination
 4. Visual recognition of normal and abnormal cervixes
 5. Contraceptive sponge insertion and removal
- Observation of uterus, ovary, fallopian tubes and ligament teres.

GD/F30S**GD/FW2 Maternity Examination Simulator**

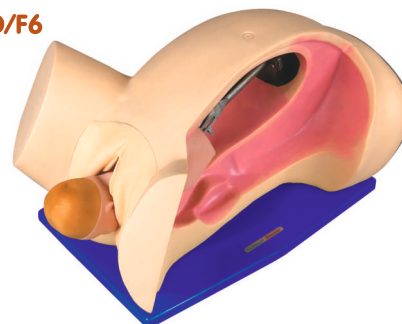
This Advanced Maternity Examination Simulator is specifically designed for professional training.

The various functions of this Simulator are as follows:-

1. Palpation, embryo heart sound auscultation, pelvis measurement and mammary nursing training
2. Inflating uterus through ball to make model lifelike
3. Adjustable heart sound speed, volume
4. Heart sound can be heard not only from stethoscope but also from microphone in front board of the model

GD/FW2**GD/F6 Leopold Maneuvers Simulator**

The model shows the seven stages of birth: engagement - descent - flexion - internal rolling - spread - reposition and external rolling - childbirthing.

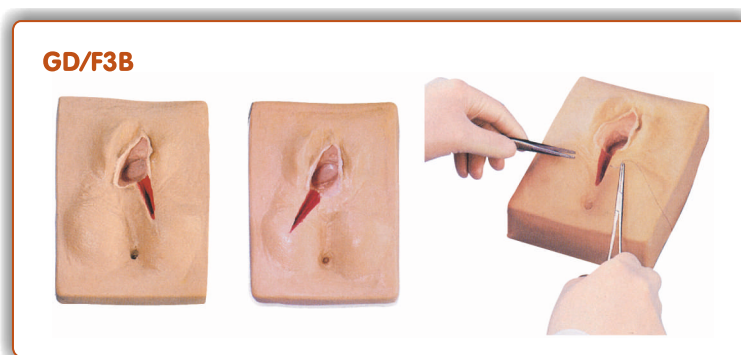
GD/F6

GD/F8 Vacuum Delivery Model

The simulator can help to demonstrate all the process of delivery. The life-size pelvis cavity has main anatomical structures. It can help to train the skills of delivery.

**GD/F3B Vulva Suturing Training Simulator**

The models demonstrate the wound in different positions in pudendum. It's made of soft materials, can be used many times in suturing training.

**GD/F3A Episiotomy Training Simulator****Features :**

1. This model is designed for practice of perineum cutting and suturing.
2. The main structure of the simulator is a perineum, which is made of simulative and the inner muscle is soft PVC. The simulator is mounted on a plastic framework.
3. There are two handles in the back and bottom of the simulator to adjust tension of the perineum.
4. Right posterior incision, left posterior incision or median incision can be selected to exercise perineum cutting and suturing.

GD/F5M Male Condom Model

1. The model is designed for male condom skill training.
2. The model is mounted on a Lucite stand.
3. The anatomy is accurate and the shape is realistic.

GD/F5M**GD/F5N IUD Training Simulator****Features:**

1. Basing on real anatomy of female genitalia, we designed this model for instructing or training of insertion or removal IUD
2. The uterus is in coronal section and covered with transparent plastic window. So students can directly observe whole insertion or removal process.

GD/F5N**GD/F9B Female Contraception Practice Simulator****Features:**

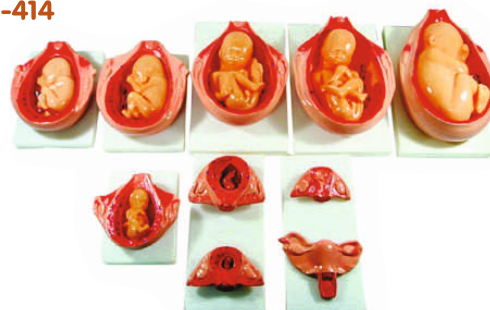
1. Imported material, high-quality and environmental protection.
2. Simulated anteversion uterus, fallopian tubes, labium, vagina and transparent abdominal wall cover in the pelvic cavity.
3. Expansion of vagina, the use of vaginal speculum, operation of female condom, contraceptive sponge and cervical cap.

GD/F9B**XC-414 The Development Process For Fetus**

Made of PVC and synthetic rubber. The model consists of 10 parts and shows the relationship between Fetus and Uterus during the gestation period.

Part No. Gestation Month Appearance/Height of Fetus

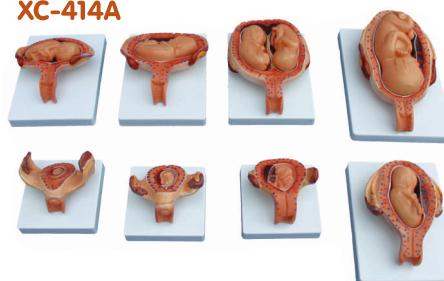
1st	Normal Uterus	Inner genitals
2nd	First	Placenta is shown
3rd	Second	Embryo looks like human.
4th	Third	Fetus is about 9cm.
5th	Fourth	Fetus is about 16cm.
6th	Fifth	Fetus is about 25cm.
7th	Sixth	Fetus is about 30cm.
8th	Seventh	Fetus is about 35cm.
9th	Eighth	Fetus is about 40cm.
10th	Nineth	Fetus is about 45cm.

XC-414**XC-414A The Development Process for Fetus (Half Size)**

This model shows relationship between fetus and uterus in 1st, 2nd, 3rd, 4th, 5th, 6th, 7th month pregnancy, and twins course in the 5th month.

Made of PVC and synthetic rubber

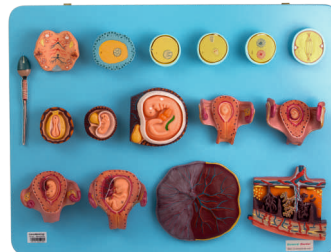
Consist of 08 parts.

XC-414A

GD/A42002 Human Fertilization and Early Embryogeny**Features :**

- 1) Shows the development from ovum to the fetus in third month
- 2) 16 positions are displayed

Material : Advanced PVC

GD/A42002**GD/A42001 Fertilization Process Simulator****Features :**

- 1) Shows two frontal sections through female genital organs
- 2) Mounted on a board. 25 positions are displayed.

Material : Advanced PVC

GD/A42001**XC-332B Human Female Pelvis Section (4 Parts)**

This model is median section, showing female genital organs with bladder and rectum. The abdominal and pelvis muscles are shown detailed.

Made of PVC plastic.

XC-332B**GD/A41003 Ovary Model**

This model consists of 8 parts, including ovary, primary ovarian follicles, secondary ovarian follicles, ovum, ovulation, ovum corpus luteum and corpus albicans. It demonstrates the procedure of ovum's development. 10 positions are displayed.

Material: Advanced PVC and painted with imported paint.

GD/A41003**GD/A42010/1 Human Placenta**

The model shows the structure of placenta and the relation between placenta and umbilical cord.

7 positions are displayed.

Material: Advanced PVC and painted with imported paint.

GD/A42010/1**GD/A42004 Embryo**

The embryo model is of about 4 weeks old, and mounted on a stand.

12 positions are displayed.

Materials: Advanced PVC and painted with imported paint.

GD/A42004

GD/J110 Advanced Trauma Simulator

Features:

1. Washing, disinfection, hemostasia enswathement etc.
2. Open fracture, truncation trauma

Features of Advance trauma manikin:

1. Facial burn: I, II, III degree
2. Laceration in forehead
3. The wound in jaw
4. Opened clavicular fracture and contusion wound on the chest
5. The wound in abdomen with small intension evisceration
6. Opened humerus fracture of right upper arm
7. Opened fracture of right hand (including parenchyma laceration, fracture and bone tissue exposure)
8. Gun wound in the right palm
9. Opened fracture of right thighbone
10. Compound femur fracture of left thigh
11. Metal pricking wound in right thigh
12. Opened tibia fracture of right leg
13. Opened fracture of right foot with truncating trauma on small phalanx
14. Burns in left forearm: I, II, III degree
15. Truncating trauma on left thigh
16. Closed tibia fracture of right leg and contusion wounds in left ankle and foot.



GD/LV18 Surgical Suturing and Bandaging Simulator

The simulator provides commonly used surgical incisions, which simulate all kinds of female thoracic and abdominal incisions, tube drains and amputation stump. Students can practice wounds treatments of washing, disinfecting, changing dressing, bandaging and etc. The skin is dry, soft and flexible, allowing the bandages to adhere better.

Features:

1. Thyroidectomy
2. Mid-sternal split - with two chest tube drains
3. Right mastectomy - with simulated drain
4. Right cholecystectomy - with simulated T-tube
5. Laparotomy
6. Appendectomy
7. Left colostomy
8. Right ileostomy
9. Abdominal Hysterectomy (Transverse incision)
10. Left nephrectomy (thoraco-abdominal incision)
11. Right nephrectomy (oblique incision)
12. Laminectomy
13. Sacral decubitus ulcer - stage 2
14. Right thigh amputation stump

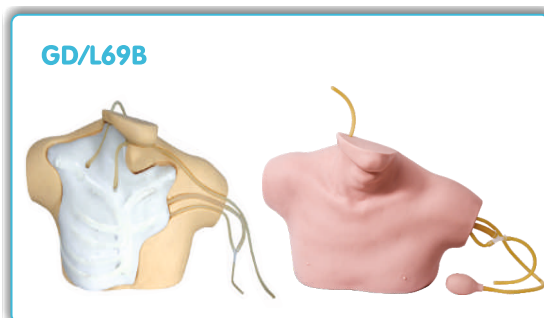


GD/L69B Central Venous Catheterization Simulator

The cervicular veins are filled with red simulative blood for internal jugular vein and subclavical vein puncturing use. Squeeze bulb can simulate carotid artery pulse. With accurate anatomy, palpation is exactly the same as on a patient. Replacing of the internal tubing and skin is extremely easy.

Features:

1. Cervical anatomical landmarks are quite clear and indicate structures of the sternal notch, clavicle, right cervical ribs, sternocleidomastoid and etc.
2. Venous system in the deep part of left neck consists of common carotid artery, internal jugular vein, external jugular vein, subclavical vein and brachiocephalic vein.
3. Internal jugular vein puncture and cannulation can be exercised.
4. Subclavical vein puncture and cannulation can be exercised.
5. Carotid artery pulse can be simulated
6. The skin and veins can be replaced and students will feel an apparent "POP" when the needle has been thrust into the vein.
7. The heart floating swan-ganz intubation can be exercised.



GD/HS10C Contrastive Intramuscular Injection Buttocks

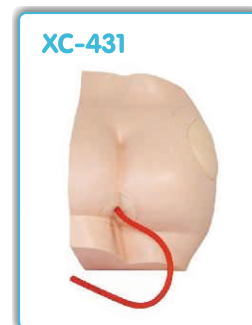
Features:

1. Structure of left gluteal: osteal marks, gluteal muscules, ischiadic nerve and veins.
2. Left gluteal can be taken off. So it is easy to observe internal structure and make sure position of ischiadic nerve and veins.
3. Gluteal intramuscular injection training.



XC-431 Buttock Injection Model

This Economical model shows the location for muscle injection on the buttock, supply for training the students to learn injection skills.



CS-6206 Suturing Skin Pad with Stand

Clear skin layers, realistic skin tissue tension Practice cutting, suturing, knotting, taking out stitches Fixing stand for convenient practice.



GD/HS19 Diabetic Foot Nursing Simulator

Features:

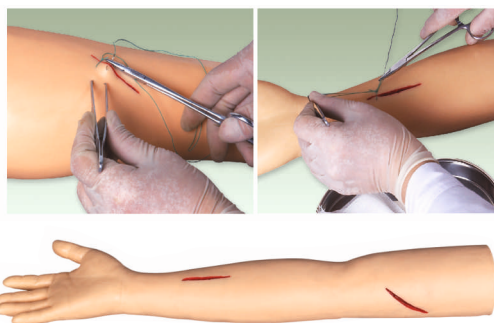
1. Designed for nursing of foot pathological changes caused by diabetes
2. No. 1,2,3 invasive trauma with minor foot infection
3. Display severe foot diseases, such as toe amputation, charcot foot and gangrene etc.
4. Soft and elastic model material, bendable toes



GD/LV1 Advanced Surgical Suture Arm

This model of Advanced Surgical Suturing Arm allows the students to practice cut, suturing, stitches release, enswathing, etc. The elasticity and flexibility of skin can make it for practice hundreds of times. There are some initial wounds on the arm if all the initial wounds have been sutured, people can cut the arm in other place for new training of suturing.

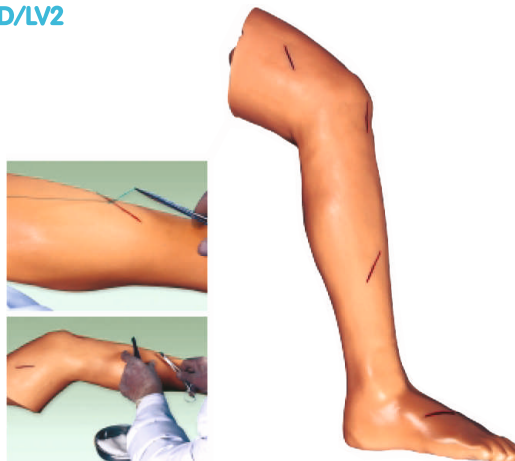
GD/LV1



GD/LV2 Advanced Surgical Suture Leg

This model of Advanced Surgical Suturing Leg allows the students to practice cut, suturing, stitches release, enswathing, etc. The elasticity and flexibility of skin can make it for practice hundreds of times. There are some initial wounds on the leg and if all the initial wounds have been sutured, people can cut the leg in other place for new training of suturing.

GD/LV2



GD/J5S Airway Intubation Model with Monitor

Features:

1. Accurate anatomical marks
2. Oral or nasal cavity intubation
3. Wrong operation, stomach inflation or laryngoscope compressing the teeth will activate warning prompting
4. One proper pupil and another mydriasis

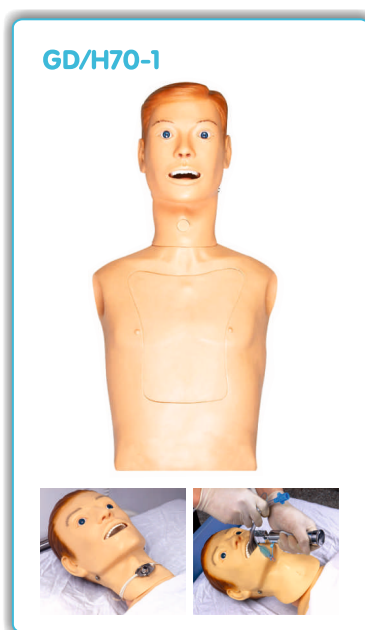
GD/J5S



GD/H70-1 Nasogastric Feeding & Tracheal Intubation Simulator

Features:

1. Hair and facing washing
2. Eye and ear washing and administering
3. Mouth cavity care
4. Endotracheal intubation
5. Oxygen inhaling
6. Nasogastric intubation
7. Sputum suction
8. Oral and nasal cavity intubation
9. Carotid artery pulse



GD/J10 Infant Airway Management Model

GD/J10

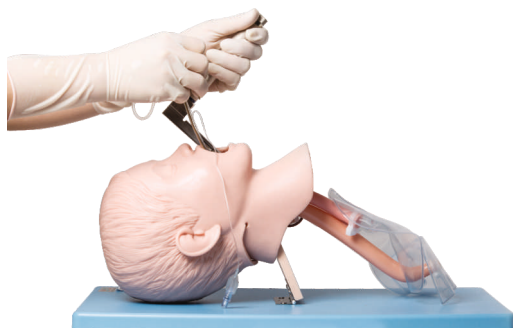


Features:

1. Realistic anatomy: tongue, cavum oris, pharynx, larynx, chordae vocals, trachea
2. Oral and nasal intubation
3. Lifelike material
4. Simulate head tilt to operate conveniently.

GD/J16 Child Tracheal Intubation Model

GD/J16



Features:

1. Realistic anatomical structure of child mouth, pharynx, trachea
2. Tracheal intubation via mouth and nose
3. Head and neck of the child can be backward in order to open airway
4. Test intubation by inhaling method

XC-101 Life Size Human Skeleton
(180 cm) Tall on a
Pelvic Mounted Stand



This economical, life size adult plastic skeleton is ideal for teaching the basics of human anatomy. Its arms and legs are removable for study. Features nerve branches, vertebral artery and herniated lumbar disc. Skull includes movable jaw, cut calvarium, suture lines and three removable lower teeth. Mounted on a sturdy 16" wide plastic base, washable, unbreakable PVC plastic.

XC-101A Life Size Human
Skeleton (180 cm) with
Muscles & Ligaments
on a Pelvic Mounted
Stand



The Skeleton allows you to demonstrate the hand painted muscles origins & Flexible joints ligaments. This skeleton is Made of Durable & Unbreakable plastic which includes stand & dust cover.

XC-130 Disarticulated Skeleton Model (BILATERAL)**XC-130**

This economical life size disarticulated skeleton will encourage students to learn the various bones of an Adult Human. It is a visual aid for the instruction of anatomy to students, doctors, nurses, or anyone interested in human skeleton. This highly accurate version contains 200 bones of an Adult Human.

XC-102B Medium Skeleton with Nerves and Blood Vessels (85 cm)**XC-102B**

This model depicts the position, course and distribution of main arteries and peripheral nerves of the human body. It may be employed as a visual aid in the instruction of anatomy to students of medicine. this model is made of PVC material.

SI/SK 501 The Model of Fetus Skeleton**SI/SK 501**

This full body Fetus Skeleton is anatomically accurate and its of deluxe quality. Every part is made in a manner so that all joints move freely. Made of PVC.

XC-103 Mini Skeleton (45 cm)**XC-103**

This miniature skeleton model features a movable jaw on springs, removable calvarium, arms and legs that are removable for individual study. This helps the young and curious kids to understand different bones in human skeleton.

Size: 45CM

XC-105C Didactic Flexible Vertebral Column with Pelvis

XC-105C



This model has a fully flexible spine throughout and features different sections of the spinal column in different color: cervical vertebrae, thoracic vertebrae, lumbar vertebrae, sacrum and the coccyx

XC-126 Life-Size Vertebral with Pelvis and Femur Head (85 cm with Stand)

XC-126



This detailed life size model shows all significant features of each vertebra, including spinal cord, nerve roots, the vertebral artery, a herniated disc and vertebral notch etc. Ideal teaching model for students, orthopedic surgeons and other medical professionals. Special features include inflexible 29" tall vertebral column complete with pelvis, femur heads, sacrum, occipital bone, vertebral artery, all nerve branches and herniated lumbar disc.

SI/SK 521 Shoulder Joint with Muscle

SI/SK 521



This Life-size model of muscular shoulder joint is a realistic replica of shoulder joint muscles and ligaments.

SI/SK 522 Hip Joint with Muscle

SI/SK 522



This Life-size model of muscular Hip joint is a realistic replica of Hip joint muscles and ligaments.

SI/SK 523 Knee Joint with Muscle

SI/SK 523



This Life-size model of muscular Knee Joint is a realistic replica of Knee joint muscles and ligaments.

XC-133 Cervical Vertebral Column with Neck Artery

Consisted of occipital plate, the 7 cervical vertebrae with intervertebral discs, cervical nerves, vertebral arteries and spinal cord. On stand.

XC-134 Cutaway Osteoporosis

Consist of 3 medially divided lumbar vertebrae with intervertebral discs. For comparison, the upper section shows healthy bone structure. The middle section shows osteoporotic bone structure and the lower section shows advanced osteoporotic bone structure with flattened plates, deformation and decreased mass.

XC-120 Thoracic Spinal Column

This model consists of the 12 thoracic vertebrae with intervertebral discs, thoracic nerves and spinal cord on stand.

XC-115 Life-Size Pelvis with 5 pcs. Lumbar Vertebrae

Consist of hip bone, sacrum with coccyx and 5 lumbar vertebrae on stand.

XC-118 Lumbar Set

Life-size lumbar vertebrae are shown with normal intervertebral disc and spinal cord with nerve roots on stand.

XC-119 Life-Size Lumbar Vertebrae with Sacrum & Coccyx & Herniated Disc

Consist of 5 lumbar vertebrae with intervertebral discs, sacrum with flap, coccyx, spinal nerves and dura mater of spinal cord on stand.

XC-109 Life-Size Shoulder Joint with Ligaments



Demonstrates abduction, adduction, anteversion, retroversion and internal / external rotation. Includes flexible, artificial ligaments. Life size on stand

XC-110 Life-Size Hip Joint with Ligaments



Demonstrates anteversion, retroversion, abduction and internal / external rotation. Includes flexible, artificial ligaments. Life size on stand.

XC-111 Life-Size Knee Joint with Ligaments



Demonstrate abduction, anteversion, retroversion internal / external rotation. Includes flexible, artificial ligaments. Life size on stand.

XC-112 Life-Size Elbow Joint with Ligaments



Demonstrates abduction, anteversion, retroversion, internal / external rotation of the radius. Includes flexible, artificial ligaments. Life size on stand.

XC-113 Life-Size Foot Joint



Demonstrate all the foot functionality and the external anatomical structures. Made of PVC Plastic, life size on stand.

XC-114 Life-Size Hand Joint



Demonstrate all the hand functionality and the external anatomical structures. Made of PVC Plastic, life size on stand.

XC-113A Life-Size Foot Joint with Ligaments



Demonstrates all of foot functionality and the external anatomical structures, including flexible, artificial ligaments. Made of PVC Plastic. Natural size.

XC-114A Life-Size Hand Joint with Ligaments



Demonstrates all of hand functionality and the external anatomical structures, including flexible, artificial ligaments. Made of PVC Plastic. Natural size.

XC-123 Adult Male Pelvis with Stand

XC-124 Adult Female Pelvis with Stand

These model sizes are just the same as realities and made of PVC plastic. Comparing a model of male pelvis with a female one, the differences between the two can be listed as following :

<u>Male</u>		<u>Female</u>	
Pelvis shapes	: Long and narrow	Pelvis shapes	: Short and broad
Pelvis cava	: Like a funnel	Pelvis cava	: Like a barrel
Aperture pelvis superior	: Heart-like	Aperture pelvis superior	: Rounded
Sacrum	: Long and narrow	Sacrum	: Broad and short
Angles of pelvis arch	: 70-75 degree	Angles of pelvis arch	: 90-100 degree
Symphysis pubica	: Long and narrow	Symphysis pubica	: Short and broad



XC-127 Birth Demonstration Model



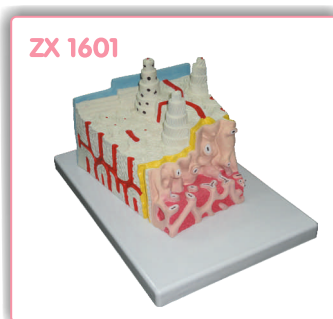
This model is designed as a visual aid for teaching the act of birth in Educational Institutes. It facilitates the students or clinical workers to get an integral knowledge of normal labor of a pregnant women. It consists of 2 innominate bones, sacrum, coccyx, with fetal skull which is firmly connected with the model by means of a flexible metal tube which can be fixed in every position.

XC-125 Female Pelvis Muscles and Organs



This model is designed as an aid to the teaching of anatomy of female pelvis in Educational Institutes. It facilitates the students or clinical workers to get an integral knowledge of various important structures, such as pelvic muscles and pelvis organs as a whole. This model is made of plastic. Natural size.

ZX 1601 Bone Microstructure



- Made of HSP resin having long durability.
- Size : 30x20x16 cm. Total 19 positions are shown.
- 3-D section of lamellar bone.
- The model helps to understand the typical elements of a lamellar bone alongwith the Volkamann & Haversian system, spongy & compact parts, endosteum, cortical substance & osteocytes.
- Model shown various planes in cross and latitudinal section.

SI/SK 511 The Model of Skull with Numbers



This Human Replica of Skull is anatomically accurate and it is numbered in part wise with movable lower jaw. Made of PVC having long durability.

XC-104 Life-Size Skull



This economical life-size adult plastic skull features a moveable jaw, cut calvarium, suture lines and 3 removable lower teeth - incisor, cuspid and molar. Dissectible into 3 parts.

XC-104C Life-Size Colored Skull



This is advanced model of XC-104C life-size skull, bones painted in different colors for precise study. Can be disassembled into 3 parts.

XC-104E Skull Model with 8 Parts Brain



This model is based on XC-104E, includes 8 parts brain: frontal and parietal lobe, temporal and occipital lobe, encephalic trunk and cerebellum.

XC-135 Skull with Cervical Spine



SI/SK 513 The Model of Fetus Skull with Stand



Made of PVC having long durability . Natural size.

ZX 1201 Human Fetal Skull



- Made of HSP resin having long durability
- Natural size. Total 41 parts labelled
- Movable lower jaw
- Showing incomplete ossification of skull bones, fontanelles frontal and parietal eminences, various skull bones like occipital, temporal, sphenoid, frontal, mandible & maxilla

BRAIN & NERVOUS MODELS

XC-308 Brain with Arteries

XC-308



This model facilitates the students to get a correct understanding of the external features of the brain and its arterial supply as a whole, as well as the relations between their component portions. External features of the brain: cerebral hemisphere, brain stem, cerebellum. The arterial supply of the brain: sources, vertebral, internal carotid arteries, arterial supply of the cerebellum and cerebrum.

XC-308D Brain with Arteries 9 Parts

XC-308D



This model is suitable for understanding the correlation of brain parts. External features of the brain: cerebral hemisphere, brain stem, cerebellum. Dissectible into 9 parts, life-size with number on stand.

XC-318 Brain with Arteries on Head

XC-318



This model shows the brain structure inside the skull. Two halves brains can be disassembled into: frontal with parietal lobes, temporal with occipital lobes, half of brain stem, half of cerebellum. Life-size, dissectible into 9 parts.

XC-318B Head with Brain

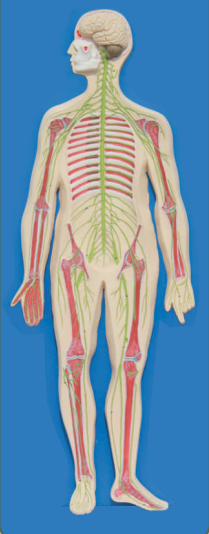
XC-318B



This model shows the head structure including brain structure inside the skull. Dissectible into 10 parts, life-size.

ZX 1307 Human Nervous System

ZX 1307



- Half life size relief model of human nervous system.
- Made of HSP resin and delivered on wooden base board.
- Model is a schematic representation of the central and peripheral nervous system, including spinal nerves radiated from central nervous system to other parts of body.
- 39 positions are displayed.

GD/A18001 Neuron

GD/A18001



This model consists of 2 parts as: neuronal body and nerve fiber. It shows neuronal axon hillock, dendritic arbor, neurofilament etc. 15 positions are displayed.

Material: Advanced PVC and painted with imported paint.

GD/A18102 Spinal Cord in the Spinal Canal

GD/A18102



This model shows ventral side, brainstem and spinal cord. Branches up to the coccygeal plexus, sympathetic trunk with its connections to the central nervous system and it displays around 47 positions. It is made of advanced PVC materials.

EYE**XC-316 Giant Eye Model**

The different parts of the eyeball model are detachable to show the following structures:

- Tunica External : Showing cornea and sclera with attachments of ocular muscles and optic nerves
- Tunica Media : Showing the iris, the ciliary body and the choroid
- Tunica Internal is Retina
- Refraction Media : Showing the lens and the vitreous body.

The model is made of PVC.

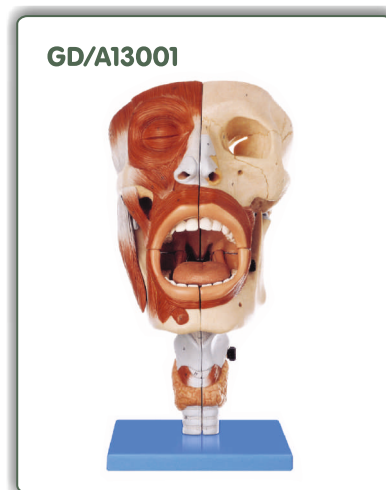
XC-316B**XC-316B Eye with Orbit**

The model shows the eyeball with optic nerves and muscles in its natural position in the bony orbit. Dissectible into 10 parts.

3 times enlarged.

E.N.T.**GD/A13001 Nasal, Oral, Pharynx and Larynx Cavities****Features:**

1. A model of the respiratory system, including the oral, nasal cavities, pharynx and larynx.
2. The upper respiratory tract is dissected into two pieces along the medical sagittal plane.
3. Ten parts and 113 positions are displayed.

GD/A13001**SI/AN 540 The Model of Lingual Muscle With Mandible (4 Parts)****SI/AN 540**

This Tongue model shows the lower jaw up to the second molar, the tongue with mouth floor musculature in median section

XC-301 Magnified Human Larynx Model

A functional model that demonstrates movements of the epiglottis and cartilages in the voice box. It helps the students to understand the morphology and structure of the respiratory tract and phonetic organ. On base 3 times enlarged and 3 parts dissectible.



XC-324 Model of the Head

XC-324



This model shows the interior parts of the mouth cavity and pharynx with network of vessels and trigeminal nerves.

XC-309 Model of the Anatomical Nasal Cavity

This model helps the students to understand the external and internal structures of the nasal cavity.

- External nose : Shows the section of the nasal bones and cartilages.
 - Nasal cavity : On the lateral nasal wall shows the superior, middle and inferior nasal conchae project medially into the nasal cavity forming the superior, middle and inferior nasal maxillary sinuses.
 - Paranasal sinuses : Shows the frontal, sphenoid and maxillary sinuses.
- Magnified $\frac{1}{2}$ the natural size. Made of PVC.

XC-309



XC-303C New Style Giant Ear Model

A giant model of the Ear, for elementary science classes, shows the three main structural parts of the hearing organ (external ear, middle ear, internal ear) and the position of the equilibrium organ of human body.

- External Ear : showing the shape of the auricle and the primary features of the external auditory meatus.
- Middle Ear : showing the type of membrane, the three auditory ossicles (hammer, anvil, stirrup) and the eustachian tube.
- Internal Ear : showing the vestibule, cochlea and the three semicircular canals of the osseous labyrinth.

XC-303C



HEART & CIRCULATORY SYSTEM

XC-307 Jumbo Heart Model

XC-307



This model helps the students to understand the external features and internal structures of the heart, and its relation with the large blood vessels. Thus a clearer conception of the routes of the systematic and pulmonary circulation can be obtained. Dissectible into 3 parts, 4 times enlarged. Made of PVC plastic.

XC-307D



XC-307D Middle Heart Model

This model shows external features and internal structures of heart and its relation between large blood vessels. Dissectible into 5 parts, 3 times enlarged.

ZX 1302 Human Circulatory System

ZX 1302



- Made of advanced HSP resin.
- Half life sized relief model.
- Mounted on wooden base.
- Model shows following anatomical structures :
Arterial and venous system,
Heart showing chambers,
Liver, Spleen, Lung, Kidneys,
Partial skeleton.
- 81 parts labeled in total.

SI/AN 543



SI/AN 543 The Dissection Model of Heart (attached with Diseased Artery Vas)

This model of heart shows the diseased artery also.

RESPIRATORY SYSTEM

GD/A13013 Transparent Lung, Trachea & Bronchial tree with Heart

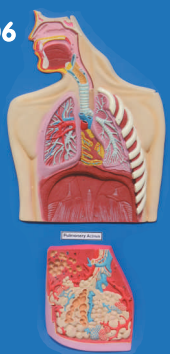
GD/A13013



1. The model consists of heart, great vessels (aorta, superior vena caval), tracheobronchial tree and mediastinum.
 2. 57 positions are displayed
- Size: 2/3 time of Life size
Material: Advanced PVC and paint

ZX 1306 Human Respiratory System

ZX 1306



Made of advanced HSP resin. Mounted on wooden sturdy base board for easy display. Well illustrated and informative. Upper half of the model displays nasal cavity, oral cavity, trachea, bronchia, bronchial tree in pulmonary lobe, right and left lungs cut open, heart in situ, pulmonary blood vessels and diaphragm with muscles attached to it.

24 positions are marked in upper part model.

Lower half of the model shows enlarged pulmonary acinus displaying pulmonary alveoli, alveolar saccules, bronchial artery and veins and alveolar capillary network.

Total 14 positions are marked in lower part model.

Model is accurately made from actual specimen references, photographs and encyclopedia reference under expert guidance.

XC-302 Magnified Human Pulmonary Alveoli Model

XC-302



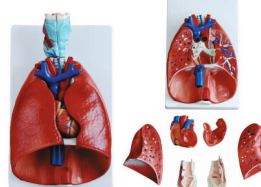
This model shows the small branches of principal bronchus:

- Section of bronchiole of no cartilage
- The relation between pulmonary alveoli and terminal bronchiole
- The structure of alveolar sac and alveolar duct
- The capillary rete in the alveolar septa

Made of PVC plastic and mounted on plastic base.

XC-320 Larynx, Heart and Lungs Model

XC-320



A life-size model separated into 7 parts. The lungs have 02 removable lobes to show the internal structures, the heart bisects showing atria, ventricles and valves, the larynx bisects and the diaphragm is shown.

XC-330 Model of the Transparent Lung Segment

XC-330



This model presents 10 segments in the right lung and 8 in the left. The distributions of the bronchial tree can be observed through the transparent lungs.

- Right Lung: Right upper lobe (3 segments), right middle lobe (2 segments), right inferior lobe (5 segments)
- Left Lung: Left upper lobe (4 segments), left inferior lobe (4 segments)
- Distribution of the bronchial tree: right bronchus, left bronchus.
- Hilus of lung

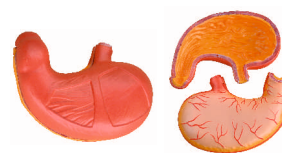
This lung is made of transparent plastic. The trachea and bronchial tree is made of PVC.

DIGESTIVE SYSTEM

XC-306 Stomach Model

This model shows the morphology of the stomach in a moderate distended state. With the longitudinal section, the model shows the structures of the gastric folds, pyloric valve, pyloric sphincter muscles, gastric mucosa and transitional mucosa of the gastric esophagus. Made of hard plastic and magnified 2 times the natural size.

XC-306



XC-311 Liver, Pancreas & Duodenum Model

An economical way to study the basic structure of the liver, spleen, blood vessels and pancreas. External structure is illustrated as well as the pancreatic duct of the pancreas. This model also shows the abdominal aorta and inferior vena cava. Life size. Dissectible into 3 parts. Made of PVC

XC-311



XC-312 Liver Model

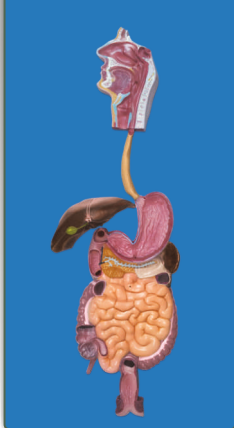
An economical way to study the basic structure of the liver. The complex vessels network in the opened liver, displayed in different colors on this model : hilus vessels, extra-hepatic and intra-hepatic bile ducts. Liver mounted on stand.

XC-312



ZX 1301-A Human Digestive System

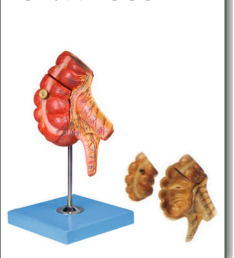
ZX 1301-A



- Made of HSP resin having long durability.
- Relief model of human digestive system in median section dissectible into 3 parts.
- Duodenum, caecum and rectum are opened. Rectum is unfolded.
- Transverse colon and front half of the stomach are removable.
- The model features the oral cavity, pharynx, esophagus, stomach, liver with gall bladder pancreas, GI tract and spleen.
- Shown 56 positions.
- Mounted on sturdy wooden frame.

GD/A12006 Appendix and Caecum

GD/A12006



The model shows wall of the caecum and appendix. Separated into 2 parts and 17 positions are displayed.

Natural size and mounted on a stand.

Material: Advanced PVC and painted with imported paint.

EXCRETORY SYSTEM

XC-331 Male Urogenital System

This is intended for middle schools as a visual aid in teaching physiology and hygiene to help the students to understand the external features of the urogenital system and the internal structures of the kidney, urinary bladder, penis and testicle. Made of soft PVC plastic.

XC-331



XC-332



XC-332 Female Urogenital System

This model serves as a model for teachers to teach students of the female urogenital system in schools and colleges. The model shows kidney, ureters, urinary bladder, uterus, accessories of uterus, vagina, ovary membrane, ligaments, uterus ligament and its artery etc. Made of PVC plastic.

XC-333 Urinary System Model

This model shows the structures of retroperitoneal cavity, pelvis with bones and muscles, inferior vena cava, aorta with its branches, upper urinary tract, kidney with adrenal gland, ureter, bladder, etc. Dissectible into 4 parts.

XC-333



XC-310-3

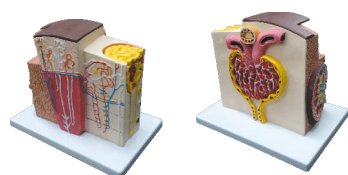


XC-310-3 Human Kidney Macro Structure with Adrenal Gland

This detailed life-size model features the kidney, adrenal gland, renal and adrenal vessels and upper portion of the ureter. Dissectible into 2 parts to reveal the cortex medulla, cortex vessels and renal pelvis. Model can be removed from the stand for instruction and patient education.

ZX 1603 Kidney Microstructure

ZX 1603



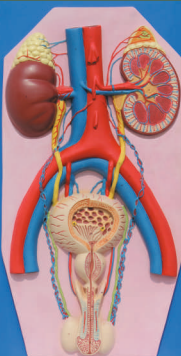
Front View

Back View

- It is made of advanced HSP resin and is mounted on sturdy wooden base for easy display.
- 45 parts are labeled in total.
- Beautifully painted in advanced colours.
- A complete 3-D model shows 5 sides view of following structures in great details : kidney in section, parenchyma of kidney and nephron, renal corpuscle and associated structures, loop of henle and associated structures.

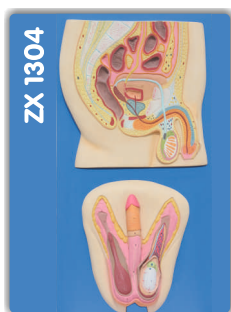
ZX 1303 Human Excretory System

ZX 1303



- Model is made of advanced HSP resin to maintain long durability.
- Delivered on wooden baseboard for easy display.
- 36 parts are labeled in total.
- Model of human excretory system shows the structures of the retroperitoneal cavity which includes : descending aorta, inferior vena cava, renal veins and arteries, ureter, urinary bladder cut open to show trigone and other structures, adrenal glands, both kidneys, iliacal vessels and prostate gland.
- Left kidney and left adrenal gland in section.
- Model also shows testis and penis in section.
- The model has anatomical details that makes it a great teaching aid.

REPRODUCTIVE SYSTEM



ZX 1304 Human Reproductive System Male

- Made of HSP resin for long durability.
- Upper half part shows median section of the system.
- Internal organs (accessory organs) shown in great detail are epididymis, vas deferens, ejaculatory ducts, urethra, seminal vesicles, prostate gland and bulbourethral gland.
- External structures shown are penis, scrotum and testicles.
- Total of 24 parts are labeled in upper half model.
- Lower half shows the model of scrotum and contents alongwith the penis. Total of 17 parts are labeled in lower half model.



ZX 1305 Human Reproductive System Female

- Made of advanced HSP resin.
- Upper half model shows both ovaries, left ovary in section, fallopian tubes with fimbriae, uterus, cut open vagina to show vaginal folds and cervix, bladder with cut open urethra, labia and rectum.
- Total 20 positions are marked in upper half model.
- Lower half model shows adnexa of uterus.
- Total 36 positions are marked in lower half model.

GD/A15102 Male Genital Organs

The model is dissected in median and mounted on a stand. It shows the penis, prostate, bladder, seminal vesicle, spermatic cord and inguinal canal and base. 72 positions displayed. It is made of advanced PVC material.

GD/A15102



GD/A15105 Female Genital Organs

This model consists of 4 parts and is mounted on a stand. It shows the internal and external female genital organs. 40 positions displayed.

It is made of Advanced PVC material.

GD/A15105



XC-429 Female Internal & External Genital Organs

This model is served as a visual aid in teaching human anatomy in nursing schools and medical colleges. It shows the entire female genital organs including uterus, uterus appendix (fallopian tube, ovary and its membrane, ligament teres uteri, ligament ovary proprium), vagina and the structure of external genital organ. Part of uterus and vagina are dissected to show its internal structures. Size: life-size.

XC-429



XC-436A Magnified Uterus Model

With the coronal section this model shows:

1. Uterus
2. The cervix is divided into a supra-vaginal portion and a vaginal portion.
3. The ligaments of the uterus are eight in number.
4. The fallopian tubes and the ovaries

XC-436A



SKIN

XC-313 Enlarged Skin Model

A greatly enlarged (105 times) cross sectional view of the human skin showing three layers and a close-up view of a hair follicle, sweat gland, fatty tissue and more. Front side and back view. Not dissectible. Shows the structures of the human scalp as follows:-

- ✦ Structure of the skin : epidermis, dermis, hypodermis
- ✦ Appendages of the skin : the sweat glands, the sebaceous glands, the hairs
- ✦ Blood vessels and nerves of the skin
- ✦ Mounted on a plastic base.

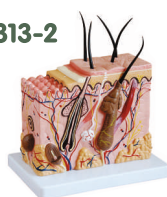
XC-313



XC-313-2 Skin Block Model

This model shows a section of human skin in three dimensional forms. Hair, sebaceous and sweat glands, receptors, nerves and vessels are shown in detail. 70 time enlarged.

XC-313-2



XC-325 Palm Anatomy

These life size models show the superficial and internal structures of the palm. Consist of 4 parts.

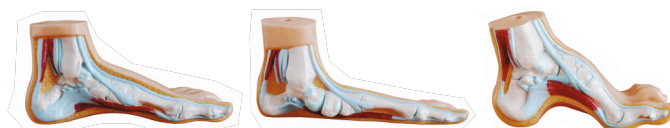
XC-325



XC-326 Normal Flat and Arched Foot

This model shows the anatomical structure and the distal end of tibia of normal, flat and arched foot.

XC-326



NS-6503 Teeth Model in Oral Cavity

NS-6503



- Life size, dental and oral cavity are separable
- Precise anatomical structure, include: Jaw gum, Upper dental arch, interior dental arch, tongue
- Mouth Care
- Demonstration of proper brushing teeth method.

XC-403A Dental Care Model (32 Teeth)

XC-403A



This model is for demonstration in mouth protection and relative clinical teaching. Consists of gum, teeth, tongue and palate. It demonstrates teeth form and oral cavity cleaning and protection. It consist of 32 teeth.

GD/A11301/2 Muscles of Male with Internal Organs (170 Cm)

GD/A11301/2



This full size high quality muscular figure 170 cm. represents a wide variety of human anatomical structures with accurate details. Hence its suitable for various medical colleges, universities, nursing training institutes, laboratories & hospitals. It shows the structure of head, neck, torso, upper and lower limbs, muscles, muscle tendon, ligaments, viscus, blood vessels, brain, etc.

GD/A11301/1 Full Size Human Body Showing Muscles & Organs (86 Cm)

GD/A11301/1



This full size high quality muscular figure represents a wide variety of human anatomical structures with accurate details. Hence its suitable for various medical colleges, universities, nursing training institutes, laboratories & hospitals.

This model consists of 27 parts, such as muscles of chest wall and abdomen, muscles of upper and lower limbs, skull, brain and viscus, It shows the structure of head, neck, torso, upper and lower limbs, muscles, muscular tendon, ligaments, viscus, blood vessels, brain, etc.

Material : Advanced PVC and painted with imported paint.

XC-204 Unisex Torso 23 Parts (85 cm)

XC-204



This outstanding torso features an exposed spine with removable vertebrae and spinal cord segments, a female breast plate and interchangeable male and female genitalia. The female organs include a fetus in the womb. Dissectible into 23 parts : torso, female breast plate, head, eyeball, brain, vertebra, spinal nerves, lung (2 parts), heart (2 parts), liver, kidney, stomach (2 parts), intestines (4 parts), male genitalia (2 parts), female genitalia with fetus (3 parts).

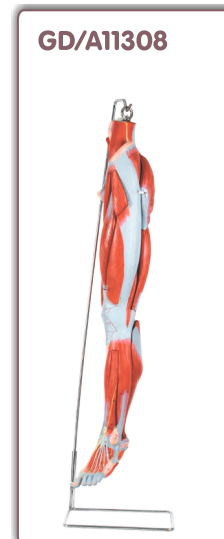
Made of PVC plastic. Mounted on a plastic base.

GD/A11305 Muscles of Arm with Main Vessels and Nerves**Features:**

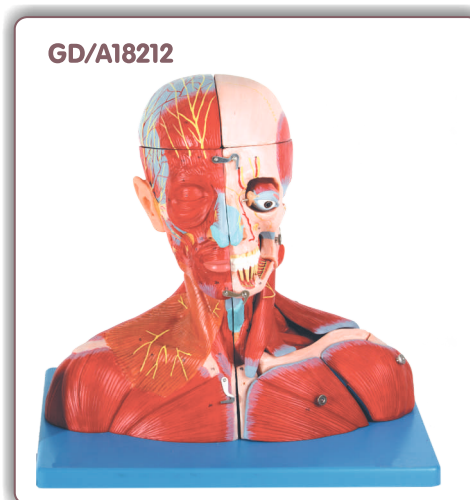
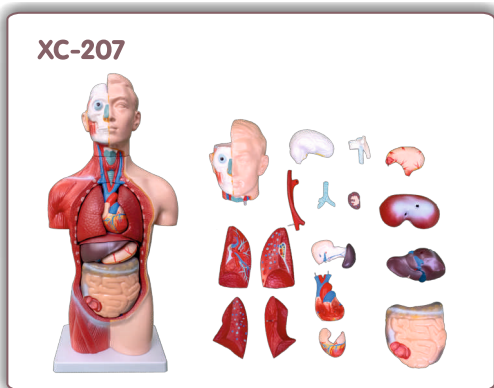
1. The model shows the network of blood vessels and nerves in the right arm, short and long extensor muscle of the radial wrist with branchioradial muscle, round pronator muscle, superficial flexor muscle of the fingers.
2. Separated into 6 parts and 87 positions displayed.

**GD/A11308 Muscles of Leg with Main Vessels and Nerves****Features:**

1. The standing model shows the most important blood vessels and nerves in the left leg, greatest gluteal muscle, tensor muscle of the broad fascia, sartorius muscle, strait muscle of the femur, semi-membranous muscle, semitendinous muscle, biceps muscle of the femur, digitorum longus muscle, triceps muscle of calf.
2. Separated into 10 parts and 82 positions are displayed.

**GD/A18212 Head and Neck with Blood Vessels, Nerves and Brain****Features:**

1. Separated into 19 parts such as:
Mimic muscular system with the deep-set muscles
Left temporomaxillary articulation
Sternocleidomastoid muscle
Carotid trigone
Trapezium Muscle
Pectoral major muscle
Deltoid Muscle
Clavicle
Eyes with muscle and nerves
Cranium
Brain with arteries
2. 190 positions are displayed

**XC-207 Human Torso 18 Parts (Sexless) 42 cm**

This Human Torso model (Sexless) includes 18 dissectible parts: torso, head, brain, trachea, esophagus and descending aorta, diaphragm, lung (4 parts), heart (2 parts), stomach, liver, kidney, pancreas and spleen, intestine, vertebra spinal nerves. Open back. Mounted on plastic base.

COMMUNITY HEALTH BAG

Community Health Bag



Products

- | | | | |
|----|---------------------------------|----|-----------------------------|
| 1 | Spirit Lamp | 11 | Forcep Non Toothed 6" |
| 2 | Test Tube Holder | 12 | Artery Forcep (straight) 6" |
| 3 | Test Tube 5" | 13 | Thermometer Clinical |
| 4 | Kidney Trays 6" Stainless Steel | 14 | Spring Balance |
| 5 | Syringe 5ml | 15 | Towel |
| 6 | Stethoscope | 16 | Measuring Tape |
| 7 | Feotoscope | 17 | Soap Dish |
| 8 | Suture Cutting Scissor 6" | 18 | Nail Brush |
| 9 | Dressing Scissor (Big) 6" | 19 | Dropper |
| 10 | Forcep Toothed 6" | 20 | Small Bowl |

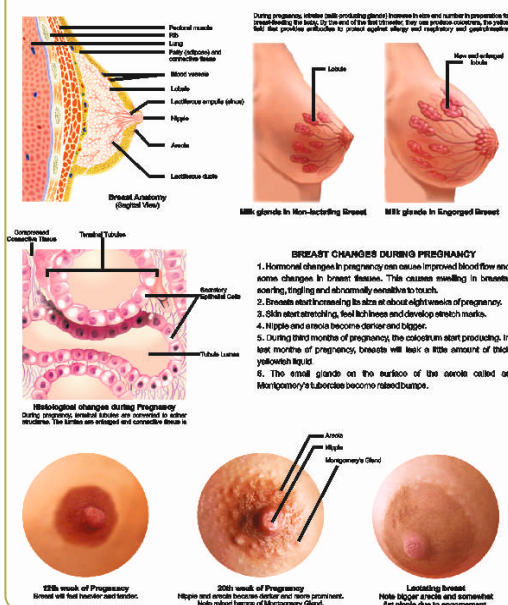
MIDWIFERY & CHILD HEALTH NURSING CHARTS

Laminated & Fitted With Best Quality Plastic Rollers Or Rigid Chemical Lamination, Aluminium Frame with Markable Surface.

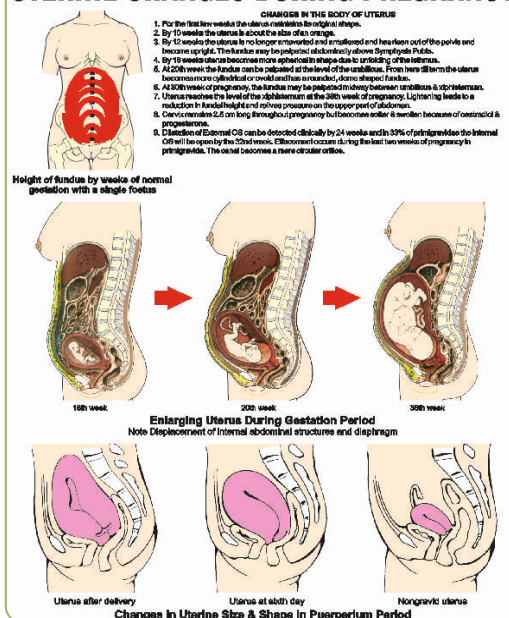
Size 51 x 66 cm. Set of 20 Charts.

INC01	Breast Changes in Pregnancy	INC11	Brow Presentation
INC02	Uterine Changes in Pregnancy	INC12	Twin Pregnancy
INC03	First Stage of labour	INC13	Placenta Praevia
INC04	Second Stage of labour	INC14	Caput Succedaneum, Cephalhaematoma
INC05	Third Stage of labour	INC15	Congenital Malformation of New Born
INC06	Complete Breech Presentation	INC16	Cleft lip-Palate
INC07	Incomplete Breech Presentation	INC17	Spina Bifida
INC08	Foot Presentation	INC18	Hydrocephalus
INC09	Shoulder Presentation	INC19	Anencephalus
INC10	Face Presentation	INC20	Breast Self Examination

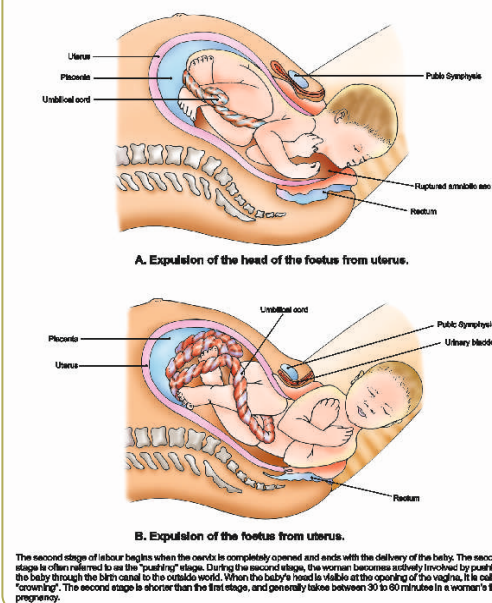
BREAST CHANGES IN PREGNANCY



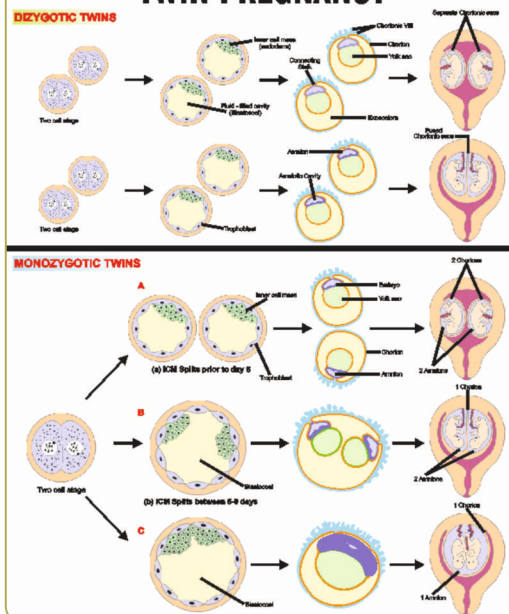
UTERINE CHANGES DURING PREGNANCY



SECOND STAGE OF LABOUR



TWIN PREGNANCY



MEDICAL & NURSING CHARTS

Laminated & Fitted With Best Quality Plastic Rollers Or Rigid Chemical Lamination, Aluminium Frame with Markable Surface.
Size 51 x 66 cm

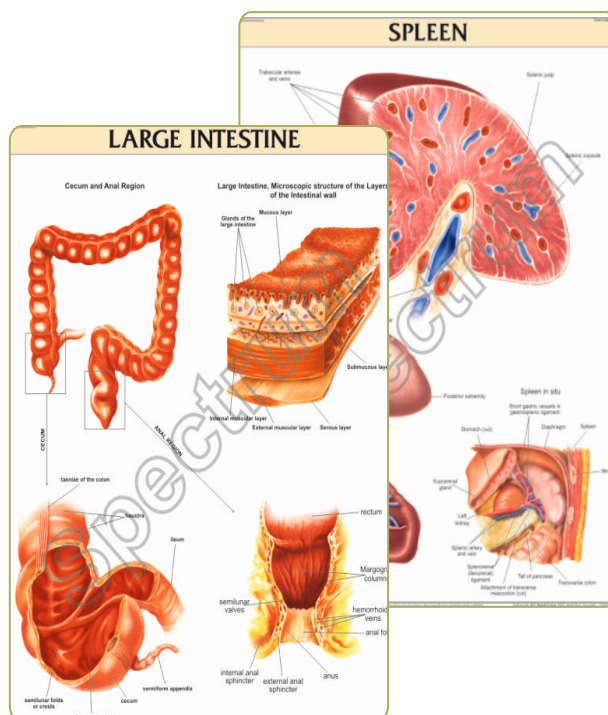
ORTHOPAEDICS

- DMN001 Human Skeleton
- DMN002 Different Types of Joints
- DMN003 Different Types of Vertebra, Atlas
- DMN004 Different Types of Vertebra, Axis
- DMN005 Different Types of Vertebra, Cervical
- DMN006 Different Types of Vertebra, Thoracic
- DMN007 Different Types of Vertebra, Lumbar
- DMN008 Different Types of Arm Bones
- DMN009 Different Types of Bones, Scapula
- DMN010 The Pelvic Girdle
- DMN011 Different Types of Leg Bones
- DMN012 Human Hand & Foot Bones
- DMN013 Ligaments of Spinal Column
- DMN014 Ligaments of Upper Limb
- DMN015 Ligaments of Lower Limb
- DMN016 Pelvic Ligaments
- DMN017 Hip and Knee
- DMN018 Vertebral Column
- DMN019 Bone: Structure & Formation



ANATOMY & PHYSIOLOGY

- DMN100 Dentition - Teeth Types
- DMN101 Mammalian Skin V. S.
- DMN102 Trachea
- DMN103 Larynx
- DMN104 Oral Cavity
- DMN105 Stomach
- DMN106 Pancreas
- DMN107 Spleen
- DMN108 Small Intestine
- DMN109 Large Intestine
- DMN110 Tongue
- DMN111 The Eye : Anterior & Posterior Chambers
- DMN112 Anatomy of Uterus
- DMN113 Structure of an Ovary
- DMN114 Ear, Nose & Throat
- DMN115 Anatomy of the Heart
- DMN116 Anatomy of the Inner Ear

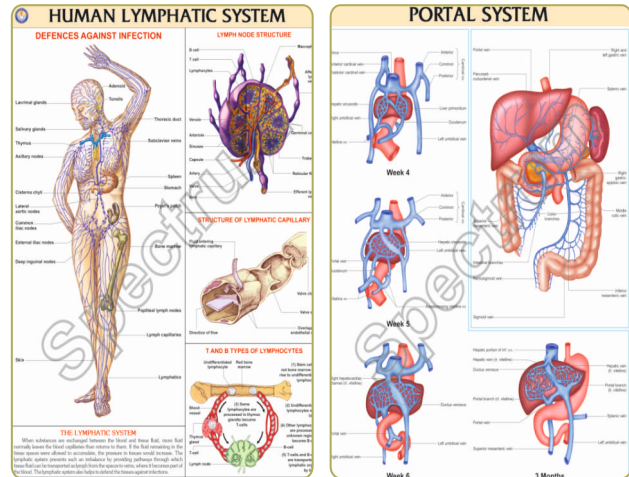


MEDICAL & NURSING CHARTS

Laminated & Fitted With Best Quality Plastic Rollers Or Rigid Chemical Lamination, Aluminium Frame with Markable Surface.
Size 51 x 66 cm

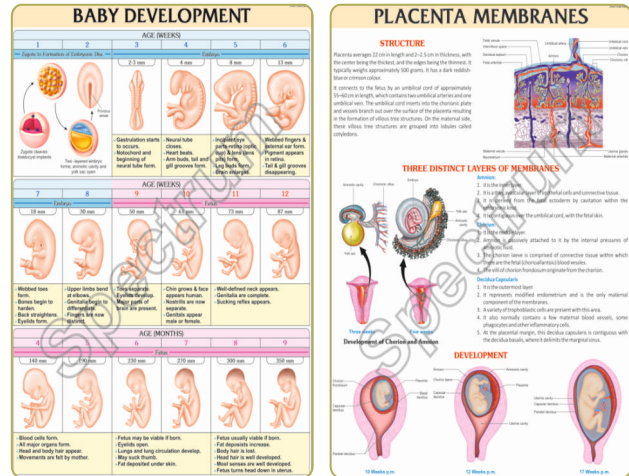
ANATOMY & PHYSIOLOGY

DMN200	Blood Circulatory System
DMN201	Reproductive System
DMN202	Portal System
DMN203	Lymphatic System
DMN700	Stages of Human Development
DMN701	Cross-Sectional Anatomy : Thoracic Viscera
DMN702	Cross-Sectional Anatomy : Abdominal Viscera
DMN703	Cross-Sectional Anatomy : Pelvic Viscera
DMN704	Development of Blood Cells



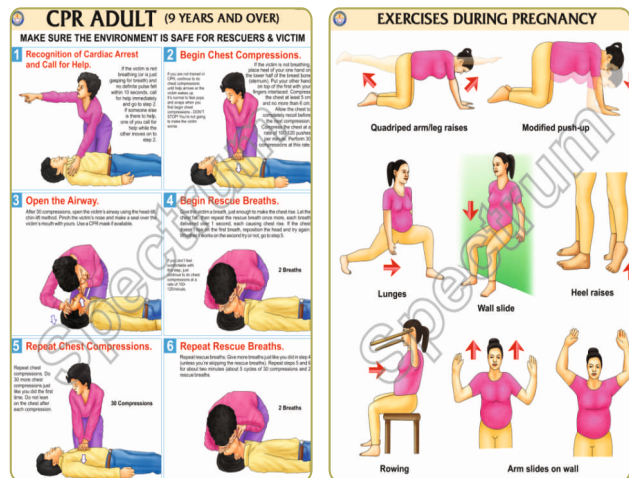
GYNAECOLOGY & OBSTETRICS

DMN300	Baby Development
DMN301	Feeding Schedule of Preterm Infants & Thumb Rules for Growth of Preemie
DMN302	Placenta Membranes
DMN303	Anatomy of Breast
DMN304	Dilation & Evacuation abortion
DMN305	Postpartum Haemorrhage
DMN306	Antepartum Haemorrhage
DMN307	Critical Periods in Human Development
DMN308	Vacuum Extraction Delivery
DMN309	Family Planning & Birth Control Methods
DMN310	Fetal Skull Development
DMN311	Fetal Brain Development
DMN312	Fetal Sex Differentiation



GENERAL HEALTHCARE & EMERGENCY

DMN400	CPR Infant
DMN401	CPR Child
DMN402	CPR Adult
DMN403	Hand Washing Technique
DMN404	How to Put on Sterile Gloves
DMN405	Prevent Infections
DMN406	Exercises During Pregnancy
DMN407	Intramuscular (IM) injection Sites
DMN408	Homemade ORS
DMN409	Back Care
DMN410	Dast Mein Kya Karein
DMN411	Autoclave



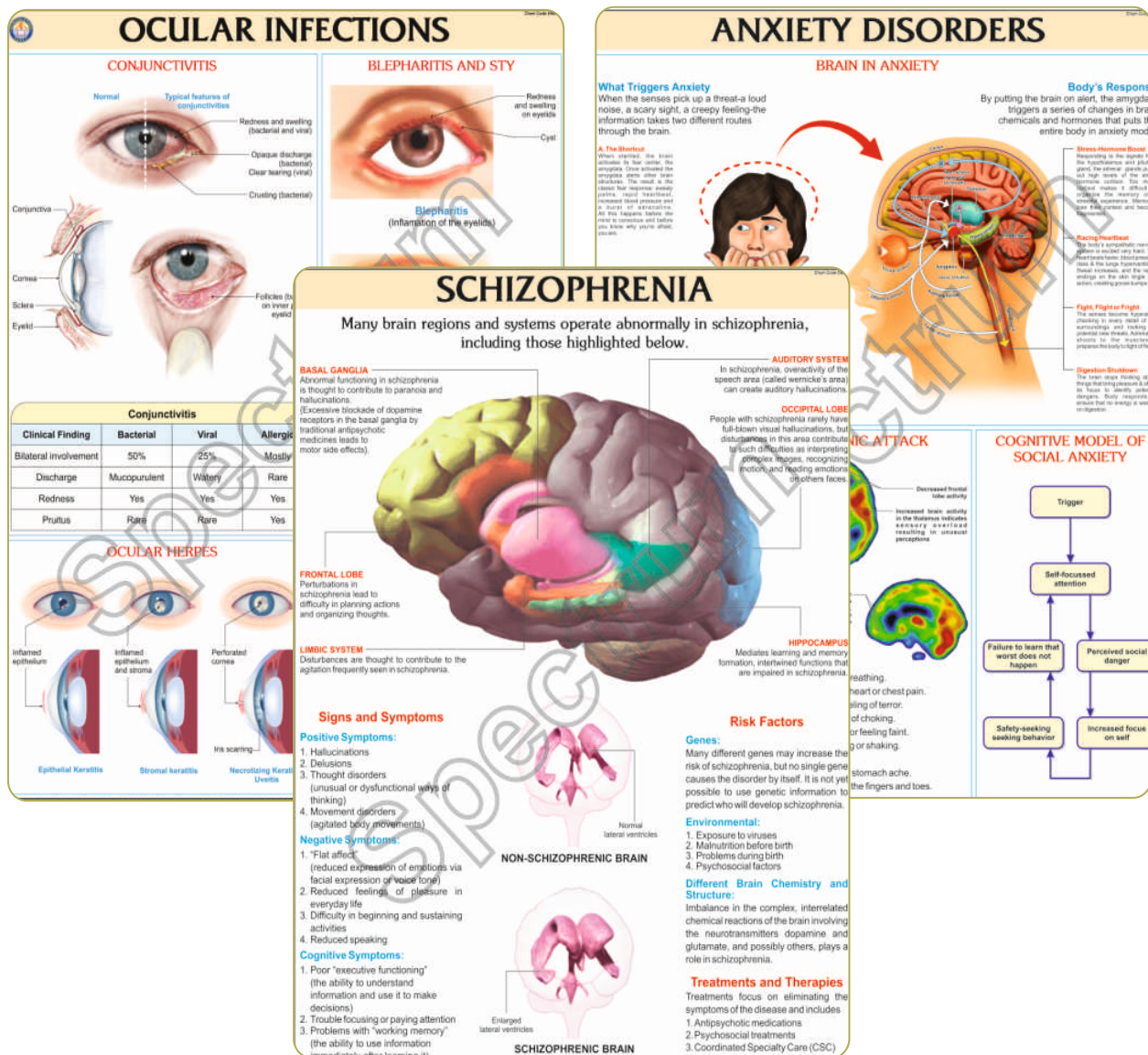
MEDICAL & NURSING CHARTS

Laminated & Fitted With Best Quality Plastic Rollers Or Rigid Chemical Lamination, Aluminium Frame with Markable Surface.
Size 51 x 66 cm

PATHOLOGY

DMN500	Ocular Infections
DMN501	Anxiety Disorders
DMN502	Obsessions & Compulsions
DMN503	Schizophrenia
DMN504	Bicornuate Uterus
DMN505	Fibroid Uterus
DMN506	Fibroadenoma Breast
DMN507	IUGR Baby
DMN508	Hydatidiform Mole
DMN509	Hydrosalpinx

DMN510	Syphilis
DMN511	Parkinson's Disease
DMN512	Alzheimer's Disease
DMN513	Epilepsy
DMN514	Ectopic pregnancy
DMN515	Heart Attack
DMN516	Hypertension
DMN517	Cardiovascular Disease
DMN518	Thyroid Disorder
DMN519	Understanding Cancer
DMN520	Understanding HIV and AIDS



MEDICAL & NURSING CHARTS

Laminated & Fitted With Best Quality Plastic Rollers Or Rigid Chemical Lamination, Aluminium Frame with Markable Surface.
Size 51 x 66 cm

NUTRITION & DIETETICS

DMN800	Top 10 Foods for Lactation
DMN801	What to Eat When Breastfeeding
DMN802	Pregnancy Plate
DMN803	Diet for Chronic Kidney Disease
DMN804	Diabetes Portion Plate

DMN805	Diabetic Food Pyramid
DMN806	Small Meals: 5 Times a Day
DMN807	Acid-Alkaline Food & Drink
DMN808	Food Pyramid

FORENSIC

DMN900	Differentiation of Head & Pubic Hairs
--------	---------------------------------------



CHARTS ON FOOD AND NUTRITION

Laminated & Fitted With Best Quality Plastic Rollers Or Rigid Chemical Lamination, Aluminium Frame with Markable Surface.
Size 70 x 100 cm. Set of 10 Charts.

- FN01 **OUR FOOD** : Chart shows various components and functions of food. It also illustrates food pyramid mentioning balance diet and daily requirement of nutrients by different age groups.
- FN02 **PROTEINS** : Chart shows both animal and plant sources of protein. It also explains various functions performed by proteins in our body and some special conditions of high protein needs.
- FN03 **FATS** : Chart shows a brief classification of fats with a mention of essential fatty acids. It also shows some of the important functions and sources of fats.
- FN04 **CARBOHYDRATES** : Chart shows classification of carbohydrates as simple and complex with their various functions in the body. It also shows various foods rich in carbohydrates.
- FN05 **VITAMINS** : Good explanatory chart depicting both fat soluble and water soluble vitamins with their various sources and reasons of requirement in the body.
- FN06 **MINERALS** : Important minerals like Sodium, Iron, Calcium, Iodine etc. required in our body to live a healthy life are shown in the chart. Chart also shows various functions they perform and their sources.
- FN07 **WATER & ROUGHAGE** : Chart shows the importance of water and roughage and some major functions performed by them in the body. Chart also gives a good knowledge about their sources.
- FN08 **DEFICIENCY DISEASES** : Chart shows the havoc conditions arise due to deficiency of various nutrients in the body and their symptoms. The understanding of chart will indicate the importance of good balanced diet.
- FN09 **OVER NUTRITION DISORDERS** : Chart shows that not only deficiency but also the over consumption of food is not good for health. Various over-nutritional disorders with their causes and symptoms are depicted in the chart.
- FN10 **FOOD'S NUTRITIVE VALUE** : Chart shows the nutrient's composition of various common foodstuffs in a tabular form.



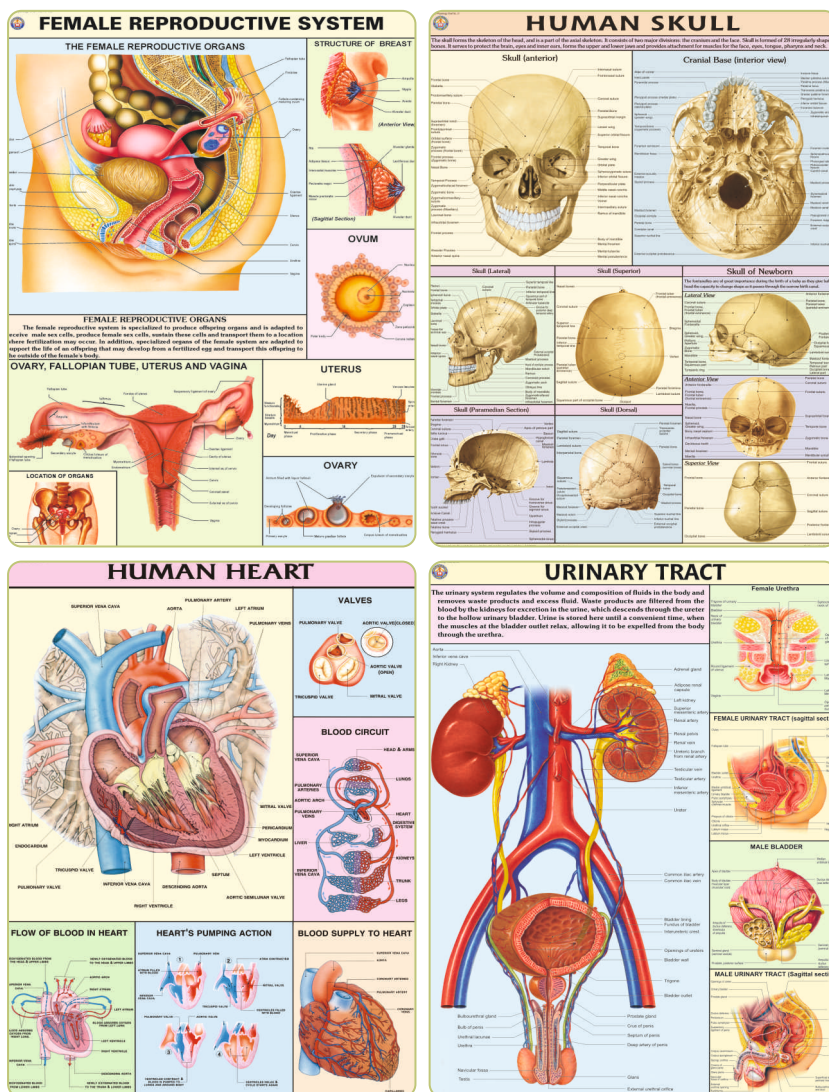
HUMAN PHYSIOLOGY CHARTS

Laminated & Fitted With Best Quality Plastic Rollers Or Rigid Chemical Lamination, Aluminium Frame with Markable Surface.

Printed on Synthetic in original colours.

Each size 70 x 100 cms. Set of 32 Charts

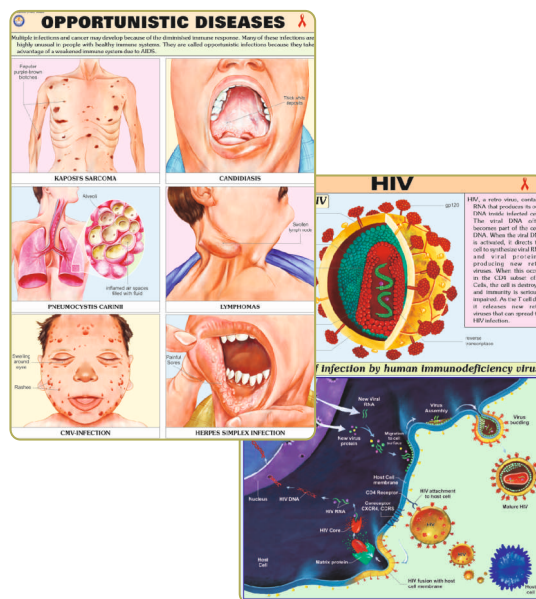
HP01S	The Skeleton	HP17S	Human Teeth
HP02S	Human Muscles	HP18S	Pregnancy & Birth
HP03S	Blood Circulation	HP19S	Human Kidney
HP04S	Nervous System	HP20S	Urinary Tract
HP05S	Digestive System	HP21S	Human Skull
HP06S	Human Eye	HP22S	Ear, Nose, Throat
HP07S	Human Ear	HP23S	Liver, Gallbladder & Pancreas
HP08S	Kidney, Skin & Excretory Organs	HP24S	Human Lungs
HP09S	The Respiratory System	HP25S	Joints of Human Body
HP10S	Human Heart	HP26S	Immune System
HP11S	Endocrine System	HP27S	Human Skin
HP12S	Male Reproductive System	HP28S	Movable Joints
HP13S	Female Reproductive System	HP29S	Human Spinal Cord
HP14S	Human Embryology	HP30S	Menstrual Cycle
HP15S	Lymphatic System	HP31S	Contraception (Birth Control)
HP16S	Human Brain	HP32S	Vertebral Column



CHARTS ON AIDS

Laminated & Fitted With Best Quality Plastic Rollers Or Rigid Chemical Lamination, Aluminium Frame with Markable Surface.
Printed on Polyart Synthetic Paper. Size 70 x 100 cm. Set of 8 Charts.

- AS01S **HIV:** Showing structure and mechanism of infection of Human Immunodeficiency Virus
- AS02S **TRANSMISSION OF HIV:** Explaining different ways which can spread the HIV infection and cause AIDS.
- AS03S **PREVENTION:** Showing various measures which, when adopted, prevent transmission of HIV infection.
- AS04S **HOW AIDS IS NOT TRANSMITTED:** Showing various routine tasks which are not involved in transmission of HIV.
- AS05S **PROGRESS OF INFECTION:** Showing how HIV infection typically progresses through various stages.
- AS06S **OPPORTUNISTIC DISEASES:** Depicting complications which an AIDS patient develops that otherwise wouldn't normally occur in a person with a healthy immune system.
- AS07S **SEXUALLY TRANSMITTED DISEASES:** Showing various sexually transmitted diseases which increase the chances of acquiring HIV infection by an individual when exposed to the virus.
- HP26S **HUMAN IMMUNE SYSTEM:** Showing different organs involved in a healthy immune mechanism. As AIDS progressively weakens the immune system, chart gives an outline of functions of Immune System to better understand what AIDS can do.



FIRST AID CHARTS

Laminated & Fitted With Best Quality Plastic Rollers Or Rigid Chemical Lamination, Aluminium Frame with Markable Surface.
Size 50 x 75 cm. Set of 15 Charts.

- FA01 **SKELETON & CIRCULATORY SYSTEM:** Gives the basic knowledge of human body.
- FA02 **TRIANGULAR BANDAGES:** Slings, knots and bandages for various parts of body.
- FA03 **ROLLER BANDAGES:** A protective covering for wound or fracture, various methods of bandaging.
- FA04 **FRACTURES:** Showing simple and compound fractures, treatment of fracture in various parts of body.
- FA05 **ARTIFICIAL RESPIRATION:** Showing Schafer's method, Silvester's method & Holger Nielsen's method of artificial respiration. Outline of Respiratory system and what is suffocation.
- FA06 **TRANSPORT OF THE INJURED:** How to carry an injured person so that minimum movement of the injured portion is assured.
- FA07 **UNCONSCIOUSNESS:** Sun Stroke, fainting, epileptic fit, Infantile convulsions, drowning.
- FA08 **HAEMORRHAGE:** Location of main arteries in the body and pressure points where when pressed, bleeding can be controlled.
- FA09 **ELECTRIC SHOCK TREATMENT:** How to remove live wires, treatment & whom to contact.
- FA10 **EMERGENCY RESUSCITATION:** Mouth to mouth and Mouth to nose method. How to give external cardiac chest compression.
- FA11 **REMOVAL OF FOREIGN BODIES FROM EYE, EAR, NOSE:** Various precautionary methods to remove the foreign bodies and to ensure safety of organs.
- FA12 **BURNS & SCALDS:** Type of burns, treatment of chemical burns, clothing on fire.
- FA13 **SNAKES & THEIR BITES:** Type of snakes, Identification of snakes on the basis of appearance, treatment of snake bite.
- FA14 **POISONS AND THEIR ANTIDOTES:** Various type of poisons, their symptoms & their treatment.
- FA15 **OUTLINE OF FIRST AID & APPLIANCES:** What is First Aid, Qualities of a First Aider and essential appliances to give first aid.

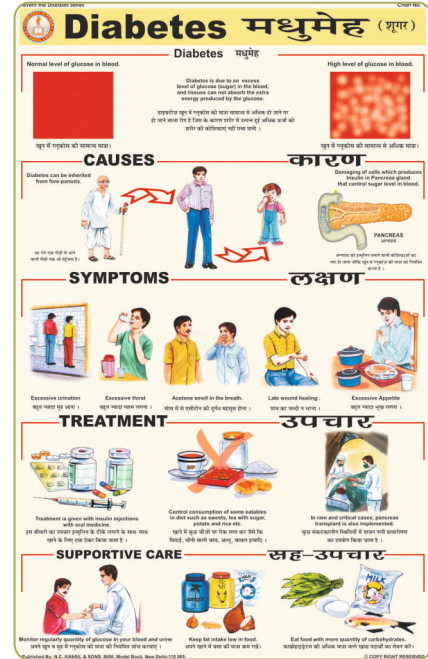


HEALTH, HYGIENE & SANITATION CHARTS

PREVENT THE DISEASES

Laminated & Fitted With Best Quality Plastic Rollers Or Rigid Chemical Lamination, Aluminium Frame with Markable Surface.
Size 50 x 75 cm. Set of 24 Charts.

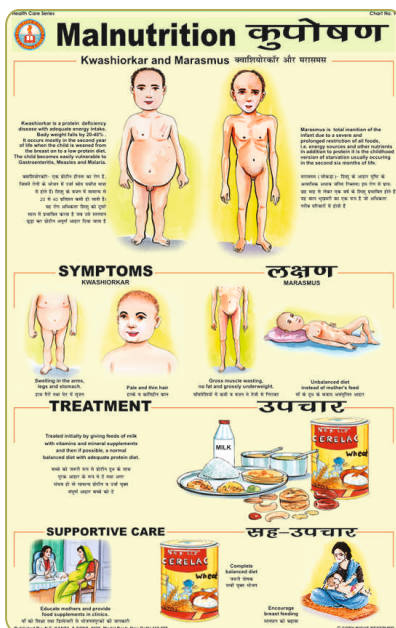
- PD01 Cholera
- PD02 Malaria
- PD03 AIDS
- PD04 Plague
- PD05 Tuberculosis
- PD06 Leprosy
- PD07 Influenza
- PD08 Jaundice
- PD09 Cancer
- PD10 Typhoid
- PD11 Viral Diseases
- PD12 Chicken Pox
- PD13 Dysentery
- PD14 Hepatitis
- PD15 Heart Attack
- PD16 Diabetes
- PD17 Asthma
- PD18 Arthritis
- PD19 Thyroid
- PD20 Blood Pressure
- PD21 Dengue
- PD22 Measles
- PD23 Food Poisoning
- PD24 Poliomyelitis (Polio)



HEALTH CARE SERIES

Laminated & Fitted With Best Quality Plastic Rollers Or Rigid Chemical Lamination, Aluminium Frame with Markable Surface.
Size 50 x 75 cm. Set of 10 Charts.

- HC01 Health Rules
- HC02 Causes of Diseases
- HC03 Prevention of Diseases
- HC04 Effects of Alcohol
- HC05 Tobacco & Habit Forming Drugs
- HC06 Clean Body
- HC07 Clean Water
- HC08 Constituents of Food
- HC09 Malnutrition
- HC10 Immunization





SPECTRUM IMPEX

ISO 9001:2015 Approved & Certified Company

20/1/4, BALLYGUNGE PLACE, KOLKATA - 700 019, INDIA

(Near Deys Medical Bus Stand)

Tel.: +91 33 2460 6007 / +91 33 4006 4940

E-mail: spectrumimpex2009@gmail.com / sales@spectrumimpex.com

Website: www.spectrumimpex.com / www.nursingmanikin.net



We Save Life by Simulation

follow us on:

